



McKinstry Drain Improvements Public Informational Meeting

Wayne County Drain Commissioner
Elmeka Steele

January 15, 2026



Agenda

- Drain and Drainage District Background
- Proposed Improvements
- Preliminary Cost Estimate
- Tentative Project Schedule
- Questions and Comments



What is a County Drain?

Drains that have been legally established under the Michigan Drain Code are under the jurisdiction of the County Drain Commissioner.

A "Drain" can include:

- Open watercourses (streams, rivers, creeks, wetlands)
- Roadside ditches or swales
- Storm sewers

Drain maintenance is completed on an as-need basis

Comprehensive drain improvement projects are completed through the Petition process



What is a Drainage District?

A drainage district is the legally defined boundary for an established county drain.

- Lands benefitted by the Drain
- Drain's watershed
- Drain's special assessment district



Special Assessment District

A drainage district serves as the special assessment district for a drain.

- Funds costs incurred to establish, construct, operate, maintain, and improve a drain
- No other general funding mechanism for maintenance of drains
- Each drainage district is its own legal entity

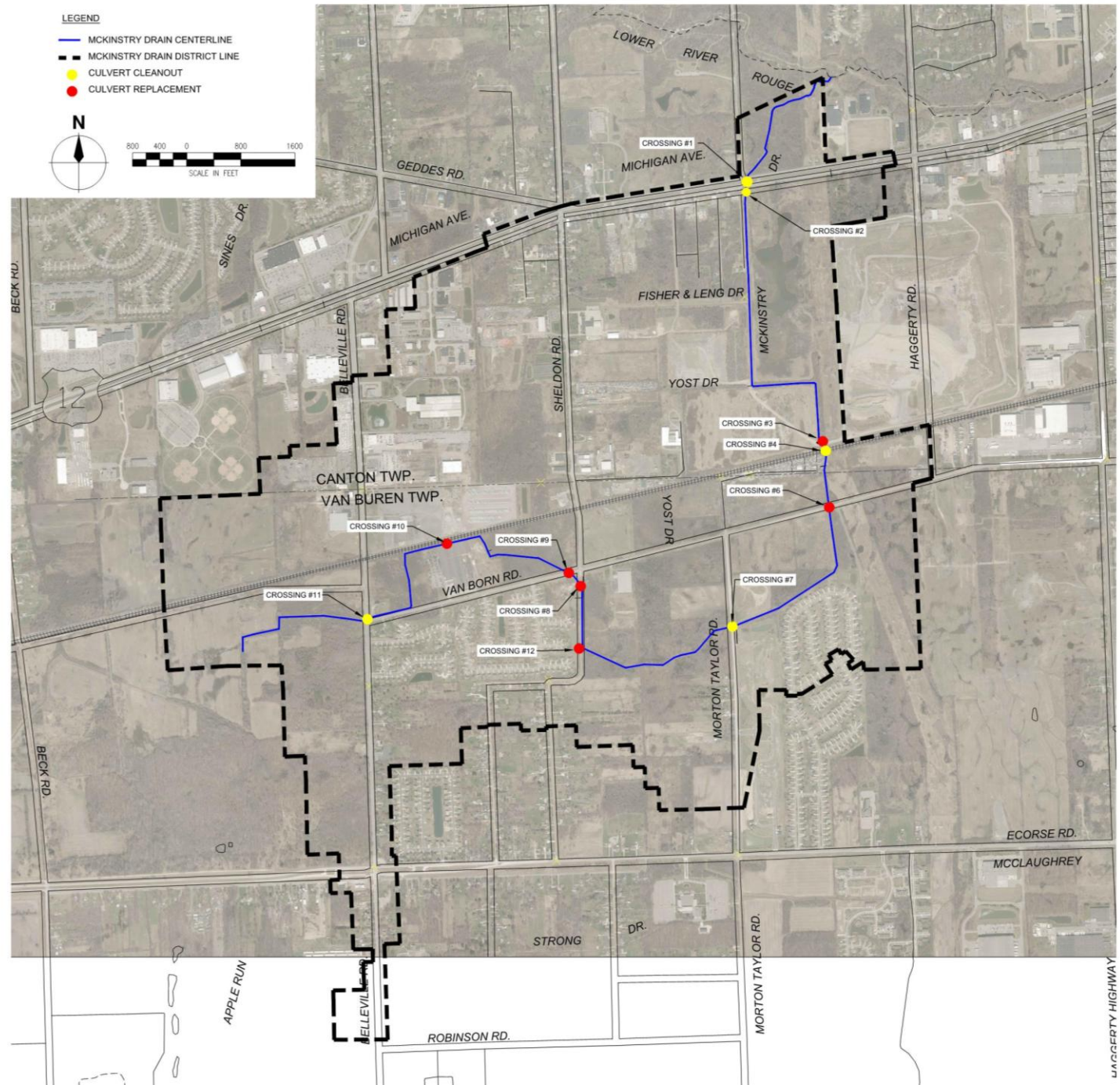


Assessable Entities

- Michigan Department of Transportation (MDOT)
- County
- Cities, Villages, Townships
- Landowners



McKinstry Drain Drainage District



McKinstry Drain Drainage District

- Established in 1860
- Drainage Area: 1,731 acres
- Canton Township: 722 acres and 185 parcels
- Van Buren Township: 1,009 acres and 864 parcels
- Wayne County Roads
- Michigan Department of Transportation
 - Michigan Avenue
 - Railroad
- Property Owners: 1,049 parcels



Proposed Improvements

Open Channel Improvements

- 3.7 miles

Crossing Improvements

- Culvert Cleanouts: 5
- Culvert Replacements: 6

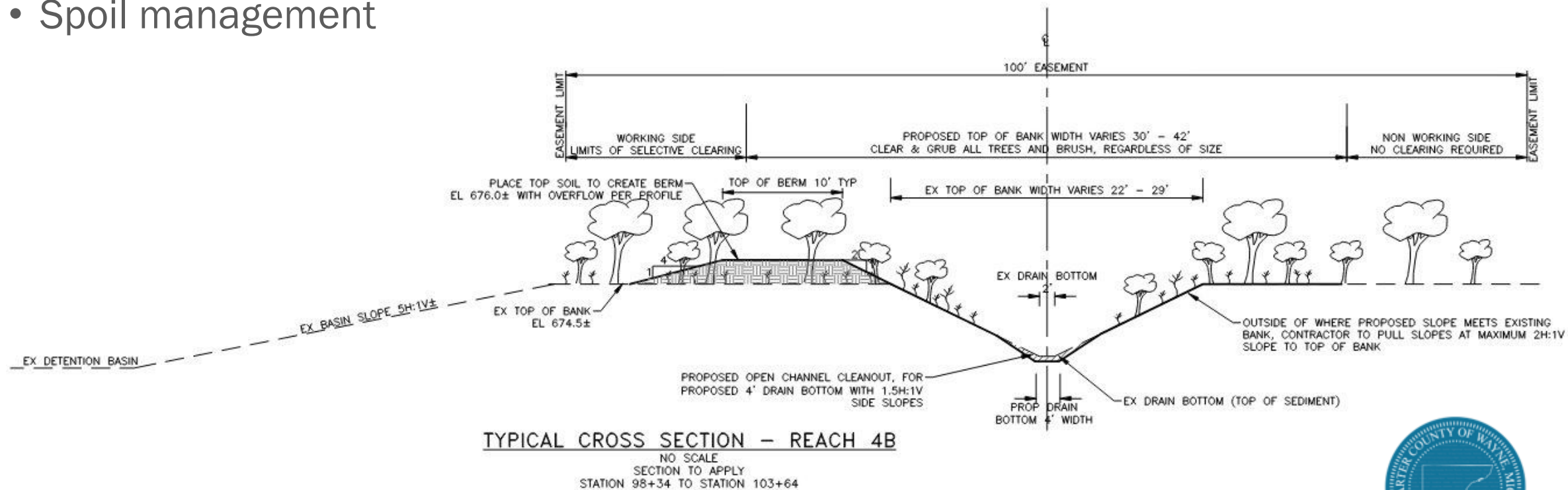
Soil Erosion and Sediment Control

- Temporary SESC measures
- Riprap bank protection
- Cleanup, seeding and final restoration



Open Channel Improvements

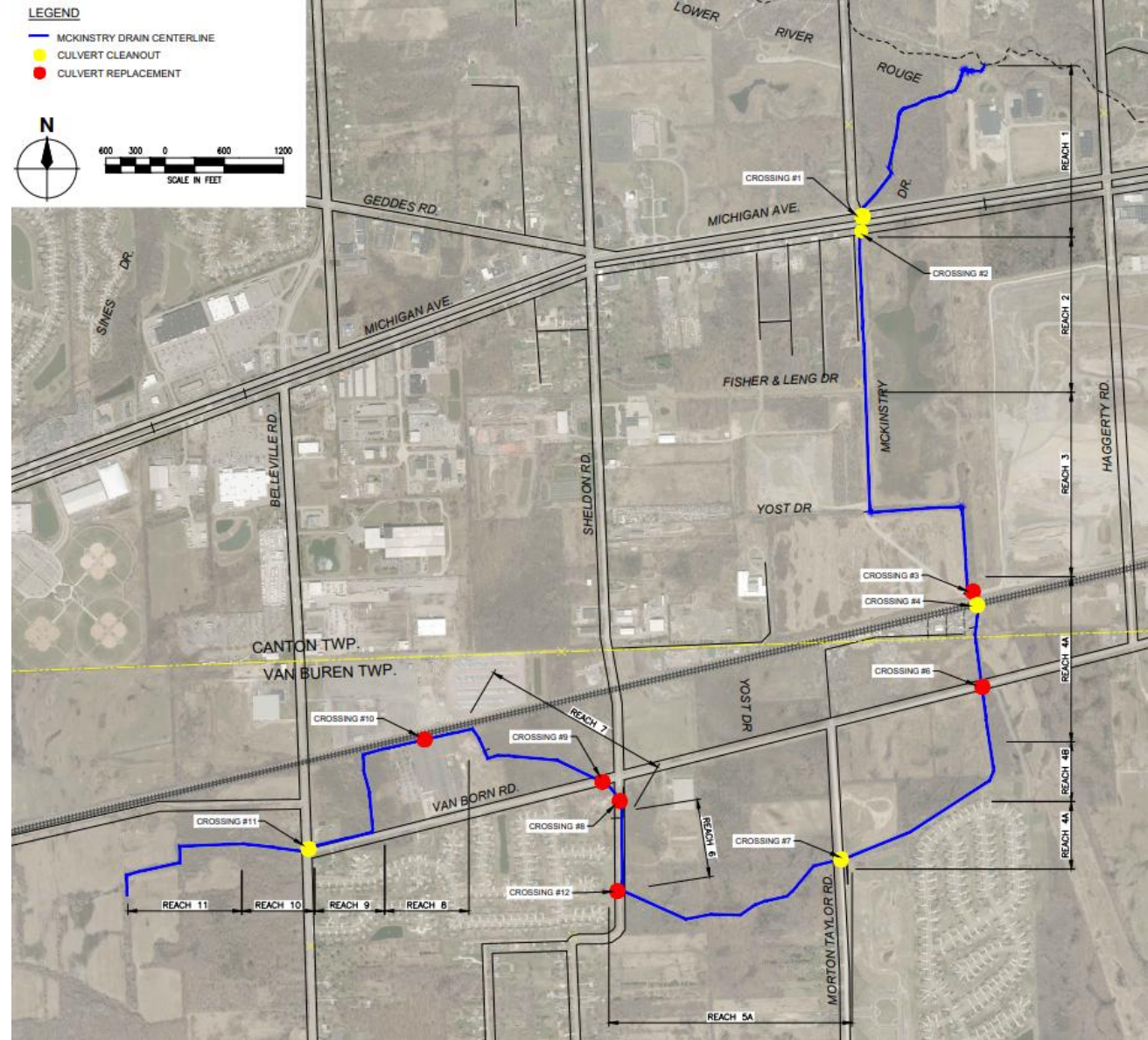
- Clearing and grubbing
- Open channel excavation (16 Reaches)
- Berm construction along Homestead Subdivision
- Spoil management



Crossing Improvements

Cleanouts

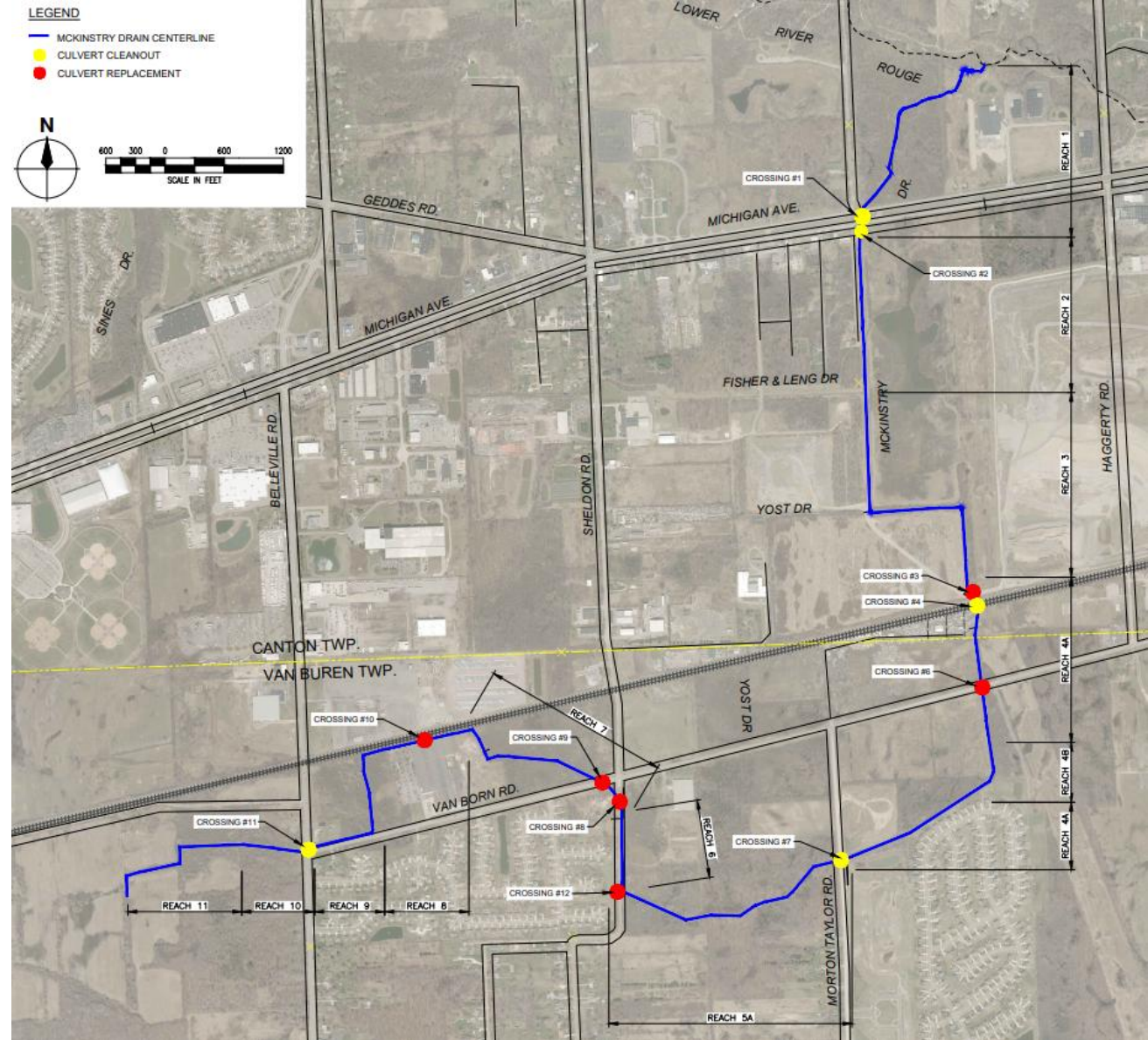
- Crossing #1: Michigan Ave.
- Crossing #2: South of Michigan Ave.
- Crossing #4: Railroad
- Crossing #7: Morton Taylor Rd.
- Crossing #11: Belleville Rd.



Crossing Improvements

Replacements

- Crossing #3: Landfill
- Crossing #6: Van Born Rd. East
- Crossing #8: Sheldon Rd. North
- Crossing #9: Van Born Rd. West
- Crossing #10: Warehouse
- Crossing #12: Sheldon Rd. South



Preliminary Cost Estimate

- Estimate of Cost includes:
 - Construction
 - Survey
 - Engineering
 - Permitting
 - Inspection and Testing
 - Construction Administration
 - Legal Fees
 - Financing Fees
 - Administrative Costs
 - Contingency as required by the Drain Code
- Preliminary Estimate of Cost - \$3.5 Million



Preliminary Cost Estimate

- Total estimated project cost - \$3.5 M
- Wayne County - \$2.0 M
- Estimated cost to be assessed to drainage district - \$1.5 M
 - Wayne County
 - Canton Township
 - Van Buren Township
 - Michigan Department of Transportation
 - State highways
 - Railroads
 - Property owners



Tentative Project Schedule

- Bid Opening – February 3, 2026
- Webinar – February 24, 2026 @ 6:00 PM
- Day of Review of Apportionments – March 3, 2026 @ 9AM – 5PM
 - Van Buren Township Hall
- Construction
 - Estimated to begin – Spring 2026
 - Estimated completion – November 2026





Questions

