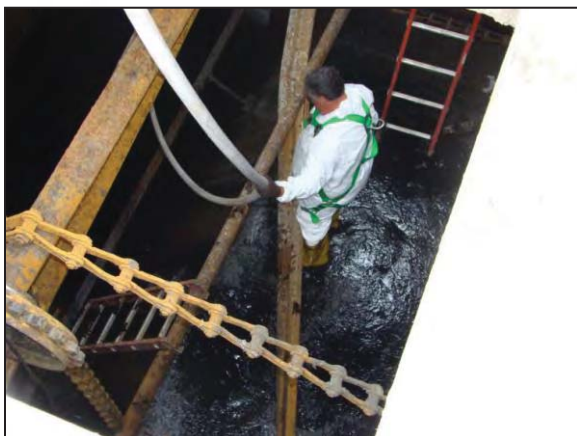




## PUBLIC SERVICES



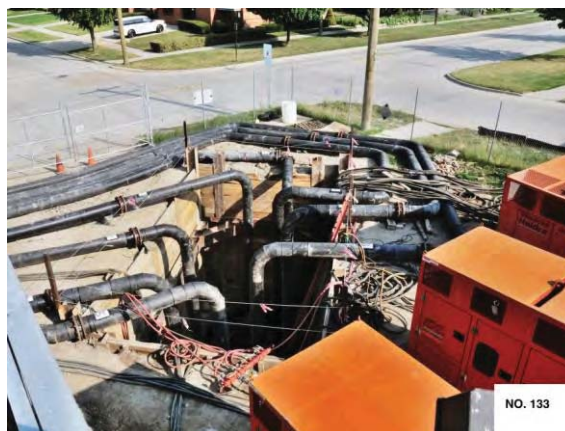
*Certified Maintenance Mechanic from the Facilities Management Division preparing for corrective maintenance at the bottom of a primary settling tank at the Downriver Wastewater Treatment Facility*



*Maintenance staff from the Facilities Management Division troubleshoot sludge dewatering equipment at the Downriver Wastewater Treatment Facility*



*"Grow Zone" established by the Water Quality Management and Facilities Management Divisions to filter storm water from the Marter Road Booster Pump Station, Northeast Sewage Disposal System*



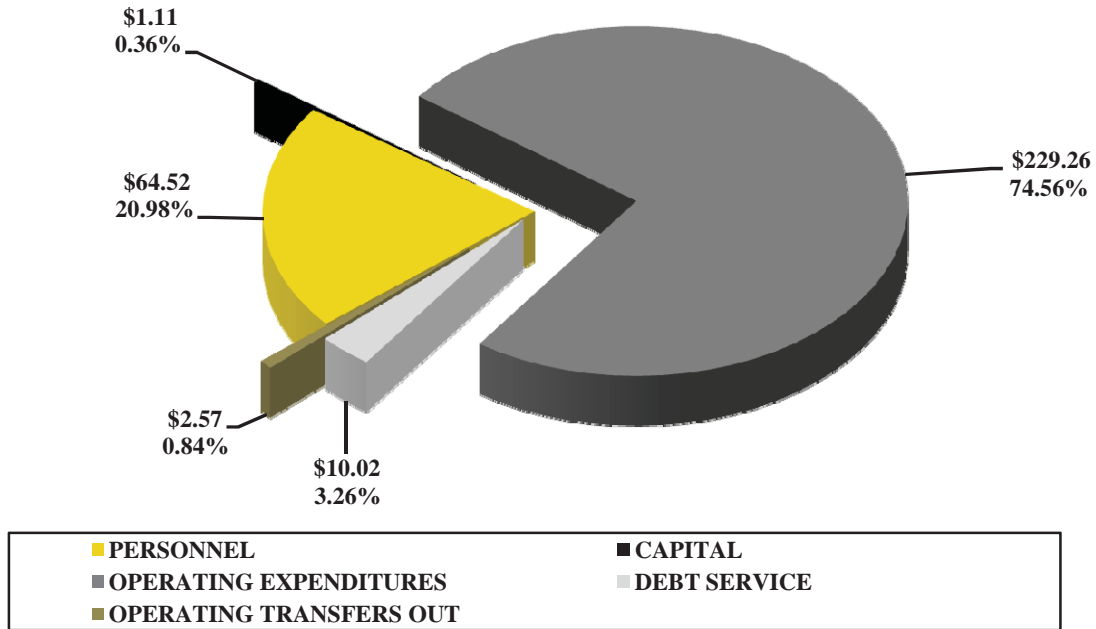
*Bypass pumping operation during improvements to the Facilities Management Division's Marter Road Booster Pump Station, Northeast Sewage Disposal System*



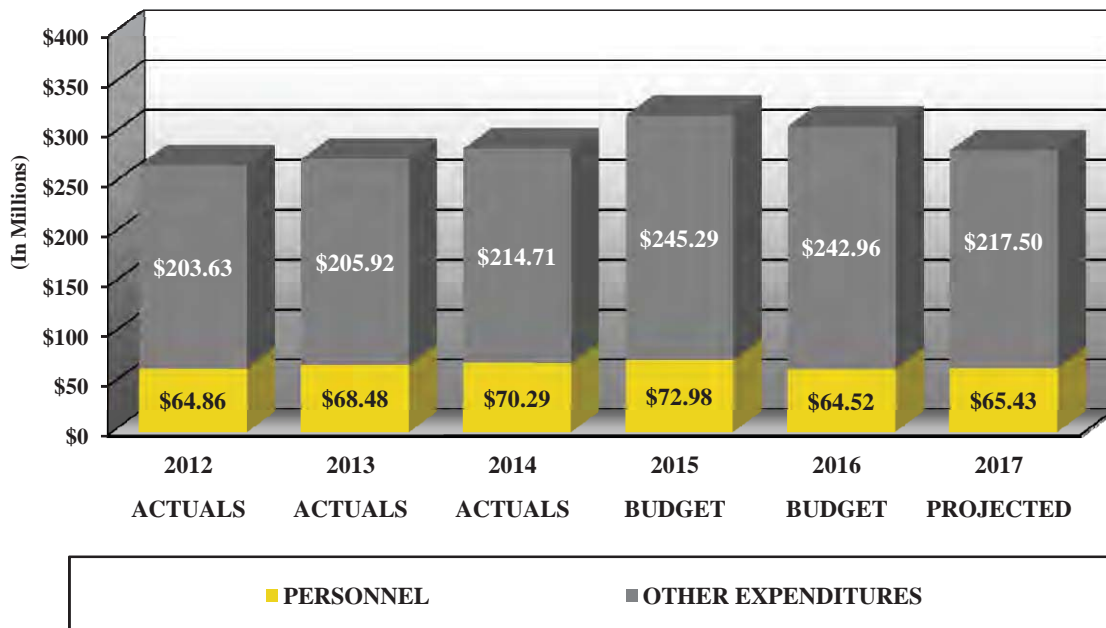
*Students from East Middle School, City of Plymouth, participate in the Water Quality Management Division's "bug hunt" in the Rouge River*

# WAYNE COUNTY DEPARTMENT OF PUBLIC SERVICES

## EXPENDITURE ANALYSIS FISCAL YEAR 2015-2016 In Millions



## EXPENDITURE TREND ANALYSIS FISCAL YEARS 2011-2012 THROUGH 2016-2017





## DEPARTMENT OF PUBLIC SERVICES

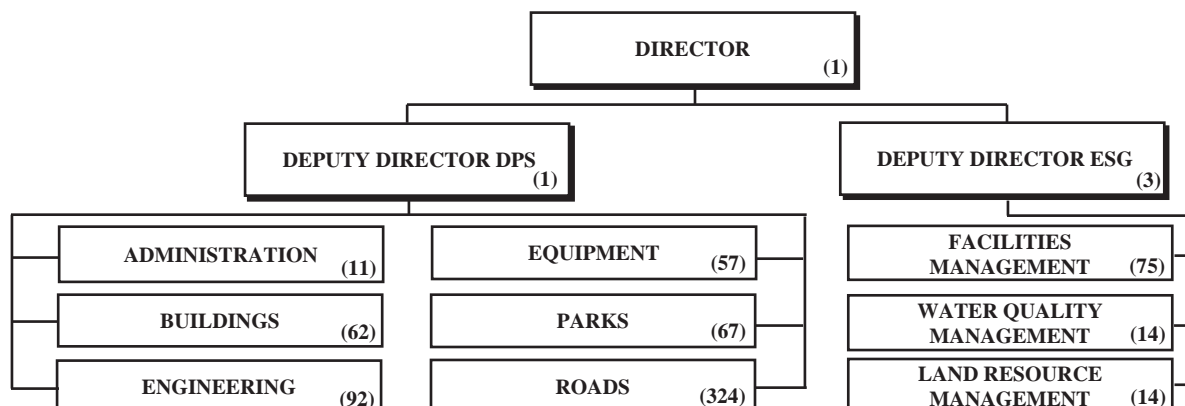
### MISSION

The Mission of the Department of Public Services is to provide roads, buildings and parks maintenance services, recreational opportunities as well as high-quality, cost-effective stormwater, wastewater, and solid waste services to Wayne County residents, municipalities, businesses and visitors so they can experience safe, convenient and reliable travel, abundant recreational opportunities, proficient and well managed drains and environmentally sound solid waste disposal.

### BUDGET SUMMARY ALL FUNDS

	FY 2013-2014 Budget	FY 2014-2015 Budget	FY 2015-2016 Budget	FY 2016-2017 Projected Budget
<b>Total Departmental Expenditures</b>	<b>\$288,915,406</b>	<b>\$318,268,222</b>	<b>\$307,475,345</b>	<b>\$282,929,859</b>
<b>Departmental Revenue</b>				
Taxes	12,791,170	11,157,227	11,584,576	11,326,036
Licenses and Permits	95,000	95,000	100,000	100,000
Federal Grants and Contracts	21,403,370	20,672,000	14,839,292	14,565,000
State Grants and Contracts	79,275,142	81,940,600	86,256,193	86,095,129
Local Grants and Contracts	10,424,675	7,907,806	8,001,115	7,441,851
Gain or Loss on Sale Secur	165,800	165,800	165,800	165,800
Charges, Fees, and Fines	123,638,550	148,141,516	147,558,478	136,756,908
Interest Income	87,000	43,500	148,500	148,500
Rent and Expense Recoveries	1,099,732	1,137,913	776,530	775,023
Other Revenue	1,753,000	1,882,500	1,600,000	1,600,000
Other Financing	29,992,088	40,689,949	32,425,902	20,322,549
Operating Transfers In	7,832,130	4,076,662	3,665,024	3,244,024
<b>Total Revenues</b>	<b>\$288,557,657</b>	<b>\$317,910,473</b>	<b>\$307,121,410</b>	<b>\$282,540,820</b>
<b>General Fund General Purpose</b>	<b>\$357,749</b>	<b>\$357,749</b>	<b>\$353,935</b>	<b>\$389,039</b>
<b>Total Budgeted Positions</b>	<b>720</b>	<b>726</b>	<b>721</b>	<b>721</b>

Contact: **Beverly Watts**, Interim Director  
400 Monroe • Detroit, MI 48201 • Phone: (313) 224-7600







## DEPARTMENT OF PUBLIC SERVICES

### MAJOR ACTIVITIES AND DESCRIPTIONS

---

**DIVISION OF ADMINISTRATION:** The Division of Administration is responsible for providing central control and coordination of the operations of the other five divisions of the Public Services Group. The Administration Division provides follow-up to assure timely completion of internal processing of grants, contracts and personnel needs. The Administration Division is also responsible for personal computing support, department fiscal control and scheduled review of Department administrative and operating procedures.

**DIVISION OF BUILDINGS:** The Division of Buildings is responsible for efficiently maintaining, operating, controlling and managing all Wayne County General Fund buildings. The goal is to maintain the facilities so that they remain secure, occupied, attractive, and environmentally safe and that all systems operate in a proper and acceptable manner. Buildings Division also provides proper housing for Wayne County agencies and a number of State agencies in both County owned buildings and leased facilities. The objectives are accomplished through the use of Tradesman, Housekeepers and Support staff.

**DIVISION OF ENGINEERING:** The Division of Engineering is responsible for providing engineering and technical services as necessary to support the programs and activities of the two operating divisions (Parks and Roads) and three support divisions (Administration, Buildings, and Equipment).

**DIVISION OF EQUIPMENT:** The Division of Equipment provides support services for the daily activities (mowing, asphalt paving, street sweeping, snow and ice control, etc.) of the various Department of Public Services divisions. This division also maintains safe and reliable automotive and heavy equipment inventory for the General Fund units. A complete machine shop is also maintained and operated for the benefit of all County Departments and divisions as requested. The Inventory/Personal Property Management (IPPM) Unit orders and stocks approximately 4,600 items such as vehicle repair parts, aggregate, paint, general hardware and fuel for all county departments.

**DIVISION OF FACILITIES MANAGEMENT:**

**DRAIN OPERATIONS:** This unit of the Facilities Management Division (FMD) is responsible for the maintenance and operation of over 500 established drainage districts extending over 1,500 miles, and all ancillary facilities to the drains. The drains/sewers staff perform three main types of work: drain inspection, service request maintenance and preventative maintenance. Drain inspection work is primarily performed during the leaf-off season from fall until spring. The information from these annual inspections provides the unit with the ability to plan and schedule for

upcoming maintenance projects. Service request maintenance is work performed, as needed, in response to service requests from citizens, and other municipalities. Preventative maintenance is work that may be performed year-round to preserve the functional integrity of County drains.

**WASTEWATER TREATMENT FACILITIES:** The Facilities Management Division operates the Downriver Sewage Disposal System, which includes operations of the Downriver Wastewater Treatment Facility (DWTF). The DWTF is capable of treating 225 million gallons per day (MGD) of raw sewage, and currently serves municipalities in Wayne County with a combined population of approximately 270,000 residents. Located on a 34-acre site in the City of Wyandotte, recent expansion and upgrades at the DWTF make it and the Downriver Sewage Disposal System a state of the art and world-class operation. The mission of the DWTF is to provide its customers with efficient, cost effective wastewater transport, treatment and disposal services. FMD continues to implement improvements through changes proposed by the Comprehensive Assessment and Master Planning Project (CAMPP).

**WASTEWATER CONVEYANCE SYSTEMS, PUMP STATIONS, AND CSO BASINS:** This unit of Facilities Management Division maintains and operates wastewater conveyance systems which serve customers in Wayne, Macomb, and Oakland Counties. The systems, called the Northeast Sewage Disposal System and the Rouge Valley Sewage Disposal System, transport wastewater to the city of Detroit Water and Sewerage Department (DWSD) facilities. Additionally, this unit maintains and operates a number of Combined Sewer Overflow (CSO) pumping station. As such, the Division is responsible for maintaining the interceptors, all associated pump and lift stations and an extensive flow monitoring system.

**INDUSTRIAL PRETREATMENT PROGRAM:** The Industrial Pretreatment Program (IPP) performs a vital environmental function by monitoring the processes and discharge of sanitary wastes from industries in the Downriver Sewage Disposal System. The duties of the IPP unit include, but are not limited to, issuing permits, performing inspections, sampling and lab work, and enforcement. The Michigan Department of Environmental Quality (MDEQ) has recognized Wayne County's IPP as one of the most comprehensive programs in the State of Michigan.

**DIVISION OF PARKS:** The Wayne County Parks Division is responsible for protecting, maintaining, and programming park areas, open spaces, and recreation and leisure facilities for the purpose of enhancing the quality of life for families and citizens served by the County of Wayne.



## DEPARTMENT OF PUBLIC SERVICES

### MAJOR ACTIVITIES AND DESCRIPTIONS *continued*

---

#### **DIVISION OF LAND RESOURCE MANAGEMENT:**

The Land Resources Management Division is responsible for protecting Wayne County's land and water resources through its solid waste management and soil erosion control programs. The Division provides regulatory oversight to solid waste facilities and issues soil erosion permits for new development projects. The Division also provides residents with recycling and blight control services through the Household Hazardous Waste (HHW) and County Lending Environmental Assistance to Neighborhoods (CLEAN) programs.

**DIVISION OF ROADS:** The Division of Roads is responsible for maintenance of the road system of approximately 1,440 County primary and local roadways and 462 miles of State trunk lines and freeways. It is the mission of the Division of Roads to protect and extend the useful life of all of the roads under the Division's jurisdiction and to keep those roads reasonably safe for public travel.

**DIVISION OF WATER QUALITY MANAGEMENT:** The Water Quality Management Division works to protect and restore Wayne County's rivers, lakes and streams through the advancement of a holistic watershed management approach. The Division

partners with communities, businesses, residents and others to reduce discharges of storm water, combined sewer overflows, and sanitary sewer overflows to the County's waterways. The Division spends significant effort to facilitate and coordinate Wayne County's compliance with the federally required Storm Water Permit issued by the Michigan Department of Environmental Quality (MDEQ). Compliance activities include illicit discharge complaint response, source identification and elimination; system mapping; water quality monitoring; public education and involvement; and pollution prevention and good housekeeping including water pollution management projects, green infrastructure retrofit planning, streambank stabilization and habitat protection/restoration efforts. In addition, the Water Quality Management Division aggressively pursues grants and other funding sources with internal and external partners, to achieve storm water permit compliance and Wayne County water resource protection/restoration goals as cost efficiently as possible. The Division provides specialized engineering services for capital improvements, regulatory compliance, and other requirements of the County's wastewater and storm water systems operated by the Facilities Management Division.

### FISCAL YEAR 2014-2015 ACCOMPLISHMENTS AND HIGHLIGHTS

---

The Roads Division used 4152 tons of asphalt to refill approximately 138,416 potholes and resurface 9 miles of county local roads. During the winter, the division used approximately 54,218 tons of salt.

**Pot Hole Blitz** - To make Wayne County roadways safer to drive on, Wayne County Roads hired 60 temporary seasonal employees to work from April 2014 to October 2014. This allowed the Roads Division to perform pothole patching which was desperately needed after a record setting winter snow fall. Additionally, Roads Division was responsible for clearing a record amount of snow from the roadways, which they did an excellent job of. Snow fall amounts during the winter of 2014 were second only to the record set in 1880-1881 of 93.6 inches.

The Equipment division continued its fleet modernization efforts with the purchase of new ten-yard dump-trucks and several new five-yard dump-trucks. These welcome additions are equipped with computerized automatic vehicle location (GPS) which allows real-time on line viewing of snow-and-ice control efforts, and replace older units that have far exceeded their useful life-cycle.

The Engineering Division started and completed the management and inspection of 8 road improvement and reconstruction projects that had a combined total construction cost of \$15 million dollars. The Parks Division continues to seek greater efficiencies

to best serve the public. The Capital Improvement Program slated for FY 2014-2015 continues with aggressive upgrades and will bring several major projects to completion. In the past year Parks has completed the following projects:

- A First Responders Memorial to honor the fallen First Responders of Wayne County was erected in Hines Park on the northwest corner of Hines Drive and Haggerty in Plymouth Township
- The First Annual First Responders Memorial Half Marathon and 5K race was held at Hines Park.
- Completion of Bennett Arboretum Phase I historic tree collection improvements
- Completion of the Elizabeth Park Northpointe Riverwalk.
- Completion of the installation of playscape, shelter, and site improvements at Kinloch and Colonial Parks.
- Exercise stations in Hines and Elizabeth Park were repaired.
- The opening of the new Chateau on the River at Elizabeth Park which replaces the former Elizabeth Park Shelter.
- Phase II of ball diamond renovations.
- New safety surfacing for play structures.



## DEPARTMENT OF PUBLIC SERVICES

### *FISCAL YEAR 2014-2015 ACCOMPLISHMENTS AND HIGHLIGHTS continued*

---

The Parks Division will undertake the following projects in FY 2014-2015:

- Continued development of the Detroit River International Wildlife Refuge.
- Implement Phase III of the bike path paving which will go from Haggerty to Seven Mile Road. This will complete the bike path renovations in Hines Park along Hines Drive.
- Application for accreditation from the Commission for Accreditation of Park and Recreation Agencies.
- Continue ball diamond renovations throughout the park system.
- Start the Elizabeth Park Greenway and Shoreline Restoration utilizing a \$300,000 grant awarded by the Michigan Natural Resources Trust Fund.
- Continue to upgrade the comfort stations to meet ADA accessibility requirements.
- The Parks Division will continue to thoroughly research, review, and apply for appropriate grants to supplement funds allocated.

In July 2014, the Downriver Wastewater Treatment Facility (DWTF) was awarded a third Platinum Peak Performance Award from the National Association of Clean Water Agencies (NACWA). The prestigious Platinum Peak Award recognizes member facilities for outstanding 100% compliance of their National Pollutant Discharge Elimination System permit limits for five or more consecutive years.

In 2014, the Wayne County Drain Commissioner held hearings under the Michigan Drain Code to revise and update certain drainage district boundaries to more accurately define the lands that are benefitted by a particular drain and to revise apportionment percentages to improve the accuracy of tax assessment rolls for drains. These hearings benefitted over 50,000 Wayne County property owners.

The Engineering Services Group (ESG) successfully obtained approximately \$3 million in grants under the Stormwater, Asset Management, and Wastewater (SAW) grant program administered by the Michigan Department of Environmental Quality. These grants benefitted Wayne County's storm water permit compliance efforts and offset capital improvement costs for wastewater facilities in the Downriver Sewage Disposal System and Milk River Intercounty Drain Drainage District.

Land Resource Management Division successfully completed its tenth year of the Household Hazardous Waste (HHW) collection program in 2014. The division held four events in FY 2014, which were hosted by Dearborn, Van Buren Township, Taylor and Westland.

These collection days were held on Saturdays in May, June, August and October with over 7,100 Wayne County residents from 41 different communities participating. More than 780,000 pounds of household hazardous waste was collected at these events.

The Land Resource Management Division CLEAN program conducted 14 clean up projects in 2014 and 10 community scrap tire collection events. A total of 660 cubic yards of waste and 12,679 scrap tires were cleaned up as a result of these projects.

The Water Quality Management Division has maintained Wayne County's compliance with our countywide Storm Water Discharge Permit from MDEQ for 16 consecutive years. In 2014, the federal grants supporting Wayne County's Rouge River National Wet Weather Demonstration Project ended in June after 22 years. A summary of the river restoration activities and the successes achieved in restoring the Rouge River over two decades is available online at [www.waynecounty.com](http://www.waynecounty.com) and includes over \$550,000 invested in 383 Rouge River restoration activities implemented by 75 different communities and organizations, thousands of hours volunteered, millions of educational pieces distributed, and much more.

Last year, more than 154 facilities were inspected for illicit connections to storm sewers or to the County's waterways, which resulted in the prevention of more than 4,525,000 gallons of polluted water from entering the surface waters of Wayne County.

Pollution prevention activities continue to be blended into existing services to provide cost-effective benefits. For example, "no mow" or "grow zones" are being established on Parks properties and along County Road right of ways to reduce the amount and intensity of mowing operations while infiltrating storm water into the ground, thereby reducing storm water runoff and associated sediment and nutrient pollution loadings to the Detroit River and Lake Erie. To date, estimated cost savings of \$750,000 have been realized through reduced mowing at the grow zones. In 2014, WQMD completed the grant funded project "Restoring Community Trees in an Urban Watershed" which resulted in the planting of over 1,100 trees within County road right of ways and on Parks properties within the Rouge River watershed. An additional 1,000 tree seedlings and 27 trees were planted at Michigan Green Schools in partnership with local communities and schools.





## DEPARTMENT OF PUBLIC SERVICES

### ***NEW INITIATIVES FOR FISCAL YEAR 2015-2016***

---

There were 132 schools recognized in 2014 as Wayne County Green Schools for implementing a minimum of 10 Specific energy-saving and environmentally friendly activities. This program has grown from 12 schools in the first year (2008). Wayne County's program is the second largest Green Schools Program in Michigan. Over 533 students from 18 schools were involved in the Downriver watersheds macroinvertebrate monitoring program last year. These "bug hunts" help assess surface water quality conditions and track progress of storm water permit and watershed restoration activities.

Design and construction of \$94 million in improvements to Wayne County wastewater systems is underway as of April 2015. Low interest loans were obtained from the Clean Water Revolving Fund to finance nearly all of the project costs. In addition, over \$5 million in storm water and watershed management projects are also underway.

The Equipment Division will continue to focus on improvements to the preventative maintenance program to improve reliability and to extend the useful life of the fleet. Recently, the Equipment Repair Unit has implemented annual safety inspections for all over-the-road and off-highway equipment. This procedure allows management the ability to schedule upcoming maintenance and reduce costly repairs. In addition, the IPPM Unit will continue efforts to reduce inventory costs through "just in time" delivery, "order on request only" and maintaining minimum levels of supplies while still meeting customer demands.

Equipment will continue its fleet modernization efforts with the planned purchase of ten snow plow/dump trucks,

twelve solar powered arrowboard flashers, ten attenuator trailers, ten pick-up trucks, four heated asphalt trailers, six sedans, and three front-end loaders to replace equipment that has exceed its life cycle.

The Facilities Management Division will continue to improve the process for assessment and collection of drain taxes through hearings to revise and update drainage district boundaries and hearings to revise and update drain assessment apportionment percentages.

The Water Quality Management Division (WQMD) will continue to work with other County divisions, local communities and others to implement innovative measures to cost-effectively manage storm water from the County's roads and properties that is discharged into rivers, lakes and streams. These measures will include maintaining and expanding "grow zones" along County roads, drains and parks, revisions to the County's storm water management program and implementation of our new grant funded projects including Collaborative Invasive Species Control in the Rouge and Detroit River AOCs, Emerald Ash Borer Restoration and Urban Reforestation in the Alliance of Downriver Watersheds, and Stormwater Management Plan Implementation.

WQMD will continue to aggressively seek partnerships and alternative sources of funding, such as grants under the Great Lakes Restoration Initiative and others to offset the costs associated with implementing the County's required storm water management activities and improvements to wastewater systems.

### ***IMPACT ON OPERATIONS***

---

The Department has invested in increased modernization in equipment, resulting in increased efficiency in operations. The Department has continued using its low salt initiative in the Roads Division, which has significantly reduced salt expenditures. This approach has permitted the Department of Public Services to be able to maintain responsive and effective snow and ice removal services, despite continual decreases in Act 51 funds and record setting snow falls.

Savings to the Environmental Services Group (ESG) budget have been realized through amendments to the user fee ordinance enacted to generate revenue commensurate with permit program costs. In addition staff will continue to seek cost effective methods of providing core services.



**DEPARTMENT OF PUBLIC SERVICES**  
**Financial Report**

	<b>FY 2013-2014 Budget</b>	<b>FY 2014-2015 Budget</b>	<b>FY 2015-2016 Budget</b>	<b>FY 2016-2017 Projected Budget</b>
<b>00101 General Fund</b>				
<b>449 DPS Engineering</b>				
<b>Revenues</b>				
Operating Transfers In	145,000	141,185	175,000	200,000
<b>Total Revenues</b>	<b>\$145,000</b>	<b>\$141,185</b>	<b>\$175,000</b>	<b>\$200,000</b>
<b>Expenditures</b>				
Services and Contractual Serv	196,849	150,436	128,935	139,039
Other Charges	290,000	282,370	350,000	400,000
Non Capital Assets	15,900	16,128	0	0
Operating Transfers Out	0	50,000	50,000	50,000
<b>Total Expenditures</b>	<b>\$502,749</b>	<b>\$498,934</b>	<b>\$528,935</b>	<b>\$589,039</b>
 <b>00201 County Road Fund</b>				
<b>449 DPS Roads</b>				
<b>Revenues</b>				
Federal Grants and Contracts	18,855,970	20,662,000	14,340,000	14,340,000
State Grants and Contracts	79,275,142	81,940,600	86,079,000	85,890,129
Local Grants and Contracts	1,539,880	1,112,000	1,109,100	1,109,100
Charges, Fees, and Fines	3,229,720	23,390,800	18,353,956	3,494,448
Interest Income	50,000	30,000	100,000	100,000
Rents and Expense Recoveries	260,000	271,000	270,000	270,000
Other Revenue	1,463,000	1,592,500	1,310,000	1,310,000
Other Financing	10,277,308	18,861,630	12,113,420	596,740
<b>Total Revenues</b>	<b>\$114,951,020</b>	<b>\$147,860,530</b>	<b>\$133,675,476</b>	<b>\$107,110,417</b>
<b>Expenditures</b>				
Personnel	26,362,688	26,257,384	26,568,047	26,560,589
Fringe Benefits	12,668,523	12,488,211	9,772,358	10,085,428
Pension	10,811,898	10,324,840	6,970,377	7,295,910
Materials and Supplies	12,101,800	12,110,200	14,567,150	14,567,150
Services and Contractual Serv	35,397,156	71,436,586	61,472,238	36,242,859
Travel	111,700	143,200	145,100	145,100
Operating Expenses	6,462,057	6,526,096	6,275,141	6,273,032
Rentals	766,312	783,068	963,556	493,708
Other Charges	362,824	708,824	708,824	708,824
Capital	4,216,500	4,216,500	4,065,000	4,065,000
Non Capital Assets	87,700	178,200	154,200	154,200
Debt Service	1,435,350	1,433,350	1,382,765	393,617
Operating Transfers Out	4,166,512	1,254,071	630,720	125,000
<b>Total Expenditures</b>	<b>\$114,951,020</b>	<b>\$147,860,530</b>	<b>\$133,675,476</b>	<b>\$107,110,417</b>





**DEPARTMENT OF PUBLIC SERVICES**  
**Financial Report**

	<b>FY 2013-2014 Budget</b>	<b>FY 2014-2015 Budget</b>	<b>FY 2015-2016 Budget</b>	<b>FY 2016-2017 Projected Budget</b>
<b>00208 County Park Fund</b>				
<b>449 DPS Parks</b>				
<b>Revenues</b>				
Taxes	9,067,436	8,729,117	9,142,176	8,883,336
Licenses and Permits	95,000	95,000	100,000	100,000
Charges, Fees, and Fines	1,330,000	1,383,000	1,637,000	1,637,000
Interest Income	20,000	7,500	28,000	28,000
Rents and Expense Recoveries	24,000	24,000	27,000	27,000
Other Revenue	290,000	290,000	290,000	290,000
Other Financing	2,524,766	1,993,941	687,979	1,016,248
Operating Transfers In	2,988,593	2,979,211	2,994,024	2,994,024
<b>Total Revenues</b>	<b>\$16,339,795</b>	<b>\$15,501,769</b>	<b>\$14,906,179</b>	<b>\$14,975,608</b>
<b>Expenditures</b>				
Personnel	3,296,003	3,055,272	3,077,718	3,077,718
Fringe Benefits	1,674,992	1,537,353	1,200,972	1,240,165
Pension	1,319,615	1,183,126	791,119	828,301
Materials and Supplies	480,493	474,444	462,679	463,246
Services and Contractual Serv	5,859,705	6,025,571	5,969,572	5,962,620
Travel	9,500	8,500	8,500	8,500
Operating Expenses	573,111	546,781	728,171	727,610
Rentals	1,102,783	1,091,511	1,114,424	1,114,424
Capital	1,128,000	700,000	659,000	659,000
Non Capital Assets	7,000	0	0	0
Operating Transfers Out	888,593	879,211	894,024	894,024
<b>Total Expenditures</b>	<b>\$16,339,795</b>	<b>\$15,501,769</b>	<b>\$14,906,179</b>	<b>\$14,975,608</b>



DEPARTMENT OF PUBLIC SERVICES  
Financial Report

	FY 2013-2014 Budget	FY 2014-2015 Budget	FY 2015-2016 Budget	FY 2016-2017 Projected Budget
<b>00228 Water Quality Management</b>				
<b>606 Environmental Programs</b>				
<b>Revenues</b>				
Federal Grants and Contracts	200,000	10,000	499,292	225,000
State Grants and Contracts	0	0	177,193	205,000
Local Grants and Contracts	0	0	37,000	15,000
Charges, Fees, and Fines	1,898,436	1,964,741	1,626,450	1,904,075
Other Financing	0	0	(191,538)	(219,808)
<b>Total Revenues</b>	<b>\$2,098,436</b>	<b>\$1,974,741</b>	<b>\$2,148,397</b>	<b>\$2,129,267</b>
<b>Expenditures</b>				
Personnel	676,168	700,512	662,082	659,768
Fringe Benefits	380,729	396,163	286,182	294,548
Pension	279,385	272,572	175,901	183,525
Materials and Supplies	192,530	48,430	90,000	90,000
Services and Contractual Serv	431,372	412,778	769,907	765,223
Travel	16,870	27,450	23,570	23,570
Operating Expenses	36,714	37,386	38,555	38,433
Rentals	69,200	65,300	69,200	69,200
Capital	0	0	7,000	0
Non Capital Assets	15,468	14,150	26,000	5,000
<b>Total Expenditures</b>	<b>\$2,098,436</b>	<b>\$1,974,741</b>	<b>\$2,148,397</b>	<b>\$2,129,267</b>
<b>00228 Water Quality Management</b>				
<b>607 Rouge River Projects</b>				
<b>Revenues</b>				
Federal Grants and Contracts	2,347,400	0	0	0
Local Grants and Contracts	1,920,600	0	0	0
<b>Total Revenues</b>	<b>\$4,268,000</b>	<b>\$0</b>	<b>\$0</b>	<b>\$0</b>
<b>Expenditures</b>				
Services and Contractual Serv	4,268,000	0	0	0
<b>Total Expenditures</b>	<b>\$4,268,000</b>	<b>\$0</b>	<b>\$0</b>	<b>\$0</b>



**DEPARTMENT OF PUBLIC SERVICES**  
**Financial Report**

	<b>FY 2013-2014 Budget</b>	<b>FY 2014-2015 Budget</b>	<b>FY 2015-2016 Budget</b>	<b>FY 2016-2017 Projected Budget</b>
<b>00229 Enviromental Programs Fund</b>				
<b>606 ESG - Environmental Program</b>				
<b>Revenues</b>				
Charges, Fees, and Fines	2,235,200	2,283,200	2,337,200	2,337,200
Interest Income	10,000	3,000	15,000	15,000
Other Financing	225,918	334,857	150,827	151,900
<b>Total Revenues</b>	<b>\$2,471,118</b>	<b>\$2,621,057</b>	<b>\$2,503,027</b>	<b>\$2,504,100</b>
<b>Expenditures</b>				
Personnel	696,224	762,262	771,928	769,143
Fringe Benefits	364,832	403,376	309,818	319,516
Pension	287,403	297,034	205,085	213,950
Materials and Supplies	28,500	29,000	28,000	28,000
Services and Contractual Serv	951,853	991,992	1,046,162	1,041,074
Travel	41,000	41,500	41,500	41,500
Operating Expenses	36,288	28,393	30,534	30,417
Rentals	55,000	55,500	55,500	55,500
Capital	1,018	0	6,500	0
Non Capital Assets	9,000	12,000	8,000	5,000
<b>Total Expenditures</b>	<b>\$2,471,118</b>	<b>\$2,621,057</b>	<b>\$2,503,027</b>	<b>\$2,504,100</b>
<b>00350 Debt Service-County Roads</b>				
<b>985 Debt Service</b>				
<b>Revenues</b>				
Operating Transfers In	2,848,537	0	0	0
<b>Total Revenues</b>	<b>\$2,848,537</b>	<b>\$0</b>	<b>\$0</b>	<b>\$0</b>
<b>Expenditures</b>				
Debt Service	2,848,537	0	0	0
<b>Total Expenditures</b>	<b>\$2,848,537</b>	<b>\$0</b>	<b>\$0</b>	<b>\$0</b>
<b>00516 Parking Lots Fund</b>				
<b>266 Parking Lots Fund</b>				
<b>Revenues</b>				
Charges, Fees, and Fines	129,219	65,000	0	0
<b>Total Revenues</b>	<b>\$129,219</b>	<b>\$65,000</b>	<b>\$0</b>	<b>\$0</b>
<b>Expenditures</b>				
Services and Contractual Serv	122,798	58,579	0	0
Other Charges	2,500	2,500	0	0
Depreciation	3,921	3,921	0	0
<b>Total Expenditures</b>	<b>\$129,219</b>	<b>\$65,000</b>	<b>\$0</b>	<b>\$0</b>



**DEPARTMENT OF PUBLIC SERVICES**  
**Financial Report**

	<b>FY 2013-2014 Budget</b>	<b>FY 2014-2015 Budget</b>	<b>FY 2015-2016 Budget</b>	<b>FY 2016-2017 Projected Budget</b>
<b>00590 Downriver Sewage Disp.Sys</b>				
<b>440 DPW - Systems</b>				
<b>Revenues</b>				
Local Grants and Contracts	5,844,970	5,434,082	5,702,718	5,330,342
Charges, Fees, and Fines	18,031,306	18,348,145	21,009,298	21,142,249
Interest Income	11,000	5,000	5,500	5,500
Other Financing	13,410,194	13,846,574	13,337,011	13,110,553
<b>Total Revenues</b>	<b>\$37,297,470</b>	<b>\$37,633,801</b>	<b>\$40,054,527</b>	<b>\$39,588,644</b>
<b>Expenditures</b>				
Personnel	2,617,863	2,602,232	2,643,537	2,633,820
Fringe Benefits	1,355,695	1,333,940	1,438,217	1,465,482
Pension	1,071,246	1,005,146	694,464	724,401
Materials and Supplies	2,366,690	2,573,553	2,684,430	2,684,430
Services and Contractual Serv	10,195,181	9,730,006	12,156,601	8,340,809
Travel	31,000	41,700	13,300	13,300
Operating Expenses	4,166,180	4,370,298	4,442,493	4,442,041
Rentals	68,000	65,000	67,000	67,000
Other Charges	29,000	34,000	46,500	46,500
Depreciation	13,410,194	13,781,574	13,800,767	13,788,415
Capital	(4,016,000)	(3,503,000)	(3,692,000)	0
Non Capital Assets	8,000	12,000	53,000	53,000
Debt Service	5,891,151	5,484,082	5,706,218	5,329,446
Operating Transfers Out	103,270	103,270	0	0
<b>Total Expenditures</b>	<b>\$37,297,470</b>	<b>\$37,633,801</b>	<b>\$40,054,527</b>	<b>\$39,588,644</b>
<b>00596 CSO Basins</b>				
<b>440 DPWs - Systems</b>				
<b>Revenues</b>				
Local Grants and Contracts	540,905	507,459	293,216	153,366
Gain or Loss on Sale of Secur	151,511	151,511	151,511	151,511
Charges, Fees, and Fines	1,926,616	2,470,159	2,997,644	3,250,024
Other Financing	1,378,000	2,463,000	3,244,000	2,651,000
<b>Total Revenues</b>	<b>\$3,997,032</b>	<b>\$5,592,129</b>	<b>\$6,686,371</b>	<b>\$6,205,901</b>
<b>Expenditures</b>				
Materials and Supplies	111,500	110,000	105,000	105,000
Services and Contractual Serv	1,582,357	2,289,650	3,014,844	2,687,224
Operating Expenses	325,500	324,000	332,000	332,000
Rentals	17,000	39,250	52,800	52,800
Capital	1,236,000	2,138,000	2,737,000	2,724,000
Debt Service	724,675	691,229	444,727	304,877
<b>Total Expenditures</b>	<b>\$3,997,032</b>	<b>\$5,592,129</b>	<b>\$6,686,371</b>	<b>\$6,205,901</b>





DEPARTMENT OF PUBLIC SERVICES  
Financial Report

	FY 2013-2014 Budget	FY 2014-2015 Budget	FY 2015-2016 Budget	FY 2016-2017 Projected Budget
<b>00598 Rouge Val Sewage Disp Sys</b>				
<b>440 DPW - Systems</b>				
<b>Revenues</b>				
Local Grants and Contracts	3,094	2,531	13,186	9,373
Charges, Fees, and Fines	55,037,782	55,861,242	57,407,653	59,703,959
Interest Income	1,000	0	0	0
Other Financing	2,830,867	2,833,536	3,073,332	3,063,913
Operating Transfers In	850,000	446,000	446,000	0
<b>Total Revenues</b>	<b>\$58,722,743</b>	<b>\$59,143,309</b>	<b>\$60,940,171</b>	<b>\$62,777,245</b>
<b>Expenditures</b>				
Materials and Supplies	43,500	39,200	38,250	38,250
Services and Contractual Serv	55,744,832	54,638,873	56,021,144	59,862,895
Operating Expenses	121,000	376,000	352,000	352,000
Rentals	17,000	29,600	25,500	25,500
Other Charges	27,500	24,000	22,000	22,000
Depreciation	2,830,867	2,833,536	2,840,506	2,832,079
Capital	(315,000)	(310,000)	(250,000)	(2,230,000)
Debt Service	253,044	249,708	890,771	874,521
Operating Transfers Out	0	1,262,392	1,000,000	1,000,000
<b>Total Expenditures</b>	<b>\$58,722,743</b>	<b>\$59,143,309</b>	<b>\$60,940,171</b>	<b>\$62,777,245</b>
<b>00599 N.E. Sewage Disposal Sys</b>				
<b>440 DPW - Systems</b>				
<b>Revenues</b>				
Local Grants and Contracts	16,725	0	0	0
Gain or Loss on Sale of Secur	14,289	14,289	14,289	14,289
Charges, Fees, and Fines	23,717,675	25,109,882	25,414,297	26,430,869
Other Financing	345,035	356,411	430,016	428,450
Operating Transfers In	0	35,000	0	0
<b>Total Revenues</b>	<b>\$24,093,724</b>	<b>\$25,515,582</b>	<b>\$25,858,602</b>	<b>\$26,873,608</b>
<b>Expenditures</b>				
Materials and Supplies	14,400	45,500	25,750	25,750
Services and Contractual Serv	23,091,812	23,749,663	23,899,004	24,828,114
Operating Expenses	455,000	455,000	532,800	532,800
Rentals	319,000	340,700	345,500	345,500
Other Charges	12,500	12,500	12,500	12,500
Depreciation	345,035	356,411	358,665	357,761
Capital	(860,000)	(192,000)	(88,000)	0
Debt Service	33,687	32,093	772,383	771,183
Operating Transfers Out	682,290	715,715	0	0
<b>Total Expenditures</b>	<b>\$24,093,724</b>	<b>\$25,515,582</b>	<b>\$25,858,602</b>	<b>\$26,873,608</b>



**DEPARTMENT OF PUBLIC SERVICES**  
**Financial Report**

	<b>FY 2013-2014 Budget</b>	<b>FY 2014-2015 Budget</b>	<b>FY 2015-2016 Budget</b>	<b>FY 2016-2017 Projected Budget</b>
<b>00631 Building &amp; Ground Maintenance</b>				
<b>265 DPS Buildings</b>				
<b>Revenues</b>				
Charges, Fees, and Fines	12,193,584	12,690,104	12,184,700	12,184,700
Interest Income	(5,000)	(2,000)	0	0
Rents and Expense Recoveries	665,431	708,082	321,000	321,000
Other Financing	(1,000,000)	0	0	0
Operating Transfers In	1,000,000	425,266	0	0
<b>Total Revenues</b>	<b>\$12,854,015</b>	<b>\$13,821,452</b>	<b>\$12,505,700</b>	<b>\$12,505,700</b>
<b>Expenditures</b>				
Personnel	3,366,806	3,643,587	3,664,343	3,664,343
Fringe Benefits	1,816,835	1,943,980	1,524,654	1,573,625
Pension	1,398,996	1,466,021	973,540	1,019,297
Materials and Supplies	726,500	726,450	609,350	609,350
Services and Contractual Serv	1,247,104	1,464,784	1,453,104	1,446,642
Travel	42,900	41,000	51,000	51,000
Operating Expenses	3,850,439	4,148,048	3,846,679	3,758,290
Rentals	219,200	211,200	209,200	209,200
Other Charges	22,040	23,187	20,083	20,206
Depreciation	148,195	148,195	153,747	153,747
Capital	15,000	0	0	0
Non Capital Assets	0	5,000	0	0
<b>Total Expenditures</b>	<b>\$12,854,015</b>	<b>\$13,821,452</b>	<b>\$12,505,700</b>	<b>\$12,505,700</b>
<b>00641 Environment</b>				
<b>540 Department of Environment</b>				
<b>Revenues</b>				
Charges, Fees, and Fines	3,629,012	4,295,243	4,360,280	4,442,384
Rents and Expense Recoveries	150,301	134,831	158,530	157,023
Other Financing	0	0	(419,145)	(476,447)
<b>Total Revenues</b>	<b>\$3,779,313</b>	<b>\$4,430,074</b>	<b>\$4,099,665</b>	<b>\$4,122,960</b>
<b>Expenditures</b>				
Personnel	1,389,615	1,558,483	1,549,426	1,544,299
Fringe Benefits	750,205	1,154,511	826,139	843,196
Pension	571,936	594,639	411,651	429,573
Materials and Supplies	52,735	61,350	73,550	73,550
Services and Contractual Serv	730,191	839,911	992,691	989,072
Travel	15,115	16,365	28,480	28,480
Operating Expenses	110,218	64,547	67,966	68,703
Rentals	100,659	93,860	93,843	93,843
Depreciation	53,839	38,608	42,869	41,244
Capital	0	0	0	4,000
Non Capital Assets	4,800	7,800	13,050	7,000
<b>Total Expenditures</b>	<b>\$3,779,313</b>	<b>\$4,430,074</b>	<b>\$4,099,665</b>	<b>\$4,122,960</b>



**WAYNE COUNTY GOVERNMENT**  
**ADOPTED BUDGET FY 2015-2016 AND PROJECTED BUDGET FY 2016-2017**

**DEPARTMENT OF PUBLIC SERVICES**  
**Financial Report**

	<b>FY 2013-2014 Budget</b>	<b>FY 2014-2015 Budget</b>	<b>FY 2015-2016 Budget</b>	<b>FY 2016-2017 Projected Budget</b>
<b>00801 Regular Drain Fund-Maint.</b>				
<b>441 DPW - Drains</b>				
<b>Revenues</b>				
Taxes	3,723,734	2,428,110	2,442,400	2,442,700
Local Grants and Contracts	558,501	851,734	845,895	824,670
Charges, Fees, and Fines	280,000	280,000	230,000	230,000
Operating Transfers In	0	50,000	50,000	50,000
<b>Total Revenues</b>	<b>\$4,562,235</b>	<b>\$3,609,844</b>	<b>\$3,568,295</b>	<b>\$3,547,370</b>
<b>Expenditures</b>				
Materials and Supplies	0	12,500	12,500	12,500
Services and Contractual Serv	344,874	345,610	729,900	530,200
Operating Expenses	5,972,000	4,345,000	4,287,000	58,825,000
Other Charges	0	50,000	50,000	50,000
Capital	(2,322,000)	(1,995,000)	(2,337,000)	(56,675,000)
Debt Service	567,361	851,734	825,895	804,670
<b>Total Expenditures</b>	<b>\$4,562,235</b>	<b>\$3,609,844</b>	<b>\$3,568,295</b>	<b>\$3,547,370</b>
<b>TOTAL DEPARTMENTAL REVENUES</b>	<b>\$288,557,657</b>	<b>\$317,910,473</b>	<b>\$307,121,410</b>	<b>\$282,540,820</b>
<b>TOTAL DEPARTMENTAL EXPENDITURES</b>	<b>\$288,915,406</b>	<b>\$318,268,222</b>	<b>\$307,475,345</b>	<b>\$282,929,859</b>



## DEPARTMENT OF PUBLIC SERVICES

### Summary of Positions

	FY 2013-2014 Budget	FY 2014-2015 Budget	FY 2015-2016 Budget	FY 2016-2017 Projected Budget
<b>201 COUNTY ROAD FUND</b>				
<b>449 PUBLIC SERVICES-ROADS</b>				
ELECTED AND EXECUTIVE	13	13	14	14
SUPERVISORY AND PROFESSIONAL	105	108	108	108
SUPPORT STAFF	369	366	364	364
<b>TOTAL POSITIONS</b>	<b>487</b>	<b>487</b>	<b>486</b>	<b>486</b>
<b>208 COUNTY PARK FUND</b>				
<b>449 PUBLIC SERVICES-PARKS</b>				
ELECTED AND EXECUTIVE	2	2	3	3
SUPERVISORY AND PROFESSIONAL	16	15	14	14
SUPPORT STAFF	51	52	50	50
<b>TOTAL POSITIONS</b>	<b>69</b>	<b>69</b>	<b>67</b>	<b>67</b>
<b>228 ROUGE DEMONSTRATIONS GRANT</b>				
<b>606 ENVIRONMENTAL PROGRAMS</b>				
ELECTED AND EXECUTIVE	1	1	1	1
SUPERVISORY AND PROFESSIONAL	8	8	8	8
SUPPORT STAFF	2	2	1	1
<b>TOTAL POSITIONS</b>	<b>11</b>	<b>11</b>	<b>10</b>	<b>10</b>
<b>229 ENVIRONMENTAL PROGRAMS FUND</b>				
<b>606 ENVIRONMENTAL PROGRAMS</b>				
ELECTED AND EXECUTIVE	1	1	1	1
SUPERVISORY AND PROFESSIONAL	9	10	11	11
SUPPORT STAFF	3	3	2	2
<b>TOTAL POSITIONS</b>	<b>13</b>	<b>14</b>	<b>14</b>	<b>14</b>
<b>590 DOWNRIVER SEWAGE DISP.SYS</b>				
<b>440 PUBLIC WORKS</b>				
SUPERVISORY AND PROFESSIONAL	14	14	16	16
SUPPORT STAFF	44	42	40	40
<b>TOTAL POSITIONS</b>	<b>58</b>	<b>56</b>	<b>56</b>	<b>56</b>
<b>631 BUILDING &amp; GROUND MAINTENANCE</b>				
<b>265 PUBLIC SERVICES -BUILDINGS AND GROUND MAINTENANCE</b>				
ELECTED AND EXECUTIVE	2	3	3	3
SUPERVISORY AND PROFESSIONAL	4	4	4	4
SUPPORT STAFF	51	55	55	55
<b>TOTAL POSITIONS</b>	<b>57</b>	<b>62</b>	<b>62</b>	<b>62</b>
<b>641 ENVIRONMENT</b>				
<b>540 ENV. INTERNAL SERVICE</b>				
ELECTED AND EXECUTIVE	2	2	2	2
SUPERVISORY AND PROFESSIONAL	9	10	10	10
SUPPORT STAFF	14	15	14	14
<b>TOTAL POSITIONS</b>	<b>25</b>	<b>27</b>	<b>26</b>	<b>26</b>
<b>TOTAL DEPARTMENTAL POSITIONS</b>	<b>720</b>	<b>726</b>	<b>721</b>	<b>721</b>





**DEPARTMENT OF PUBLIC SERVICES**  
**BUDGET CHANGE AND HIGHLIGHTS FY 2015-2016**

Increase / (Decrease) from 2014-2015 Adopted Budget		Description of Change
<b>REVENUES</b>		
Taxes	427,349	Increase in Property Tax revenue for Parks.
Licenses and Permits	5,000	Increase in Park Permit Fee revenue.
Federal Grants and Contracts	(5,832,708)	Decrease due to completion of Capital Improvement Projects.
State Grants and Contracts	4,315,593	Increase in State Grants to Roads.
Local Grants and Contracts	93,309	Increase due to changes in Debt.
Charges Fees and Fines	(583,038)	Decrease is due to Building Consolidations
Interest Income	105,000	Higher return on investments.
Rent and Expense Recoveries	(361,383)	Decrease in Building Rental Fees.
Other Revenue	(282,500)	Decrease due to completion of Road Maintenance Projects.
Other Financing	(8,264,047)	Decrease in Use of Fund Balance for Roads and Parks Projects.
Operating Transfers In	(411,638)	Decrease in Buildings General Fund Allocation.
<b><u>TOTAL REVENUES</u></b>	<b><u>\$(10,789,063)</u></b>	
<b>EXPENDITURES</b>		
Personnel	357,349	Increase due to staffing changes.
Fringe Benefits	(3,899,194)	Based on published fringe rates.
Pension	(4,921,241)	Based on published fringe rates.
Materials and Supplies	2,466,032	Increase anticipated in winter maintenance.
Services and Contractual Services	(4,480,337)	Decrease due to completion of Roads Construction Projects.
Travel	(8,265)	Decrease in Conference expenses.
Operating Expenses	(288,210)	Decrease in Liability Payments.
Rentals	221,534	Increase in Building rent.
Other Charges	72,526	Increase in Drain Assessments.
Depreciation	34,309	Increase in depreciated assets.
Capital	53,000	Increase in copier purchases.
Non Capital Assets	8,972	Increase in computer purchases.
Debt Service	1,280,563	Increase due to changes in Debt budget presentation.
Operating Transfers Out	(1,689,915)	Decrease in transfer for Debt related to bonds.
<b><u>TOTAL EXPENDITURES</u></b>	<b><u>\$(10,792,877)</u></b>	



*This page intentionally left blank.*