

REGISTER OF DEEDS

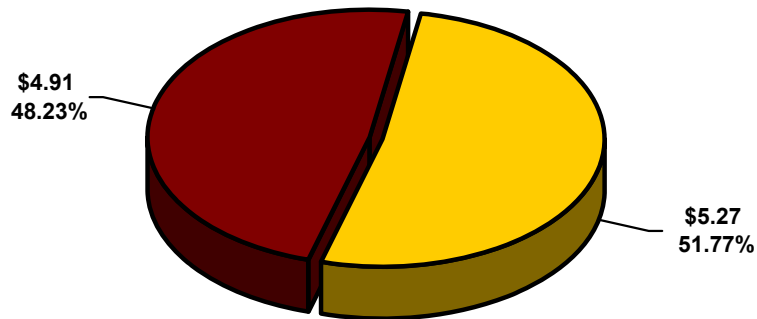


Register of Deeds Search Counter and Customer Service Area. Anyone looking for property ownership can come into our office and research the history of a property for a fee of \$5.00. Any copy of a document can be purchased at \$1.00 per page. The same service is provided on the Register of Deeds' website, www.waynecountylandrecords.com, for the same charge.

In 2008 the Property Fraud Task Unit was awarded the National Association of Counties achievement award in recognition of an effective and innovative program which contributes to an enhances county government in the United States. The Property Fraud Task Unit exists through the efforts and financial support of the Register of Deeds.

WAYNE COUNTY REGISTER OF DEEDS

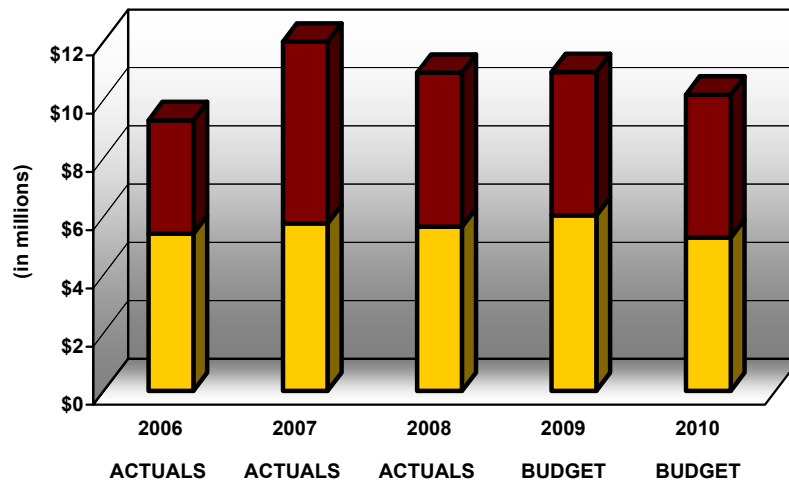
EXPENDITURE ANALYSIS
FISCAL YEAR 2009-2010
\$10.18 (in millions)



■ PERSONNEL

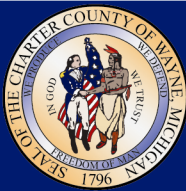
■ OPERATING EXPENDITURES

FIVE-YEAR EXPENDITURE TREND ANALYSIS FISCAL YEARS 2005-2006 THROUGH 2009-2010



■ PERSONNEL

■ OTHER EXPENDITURES

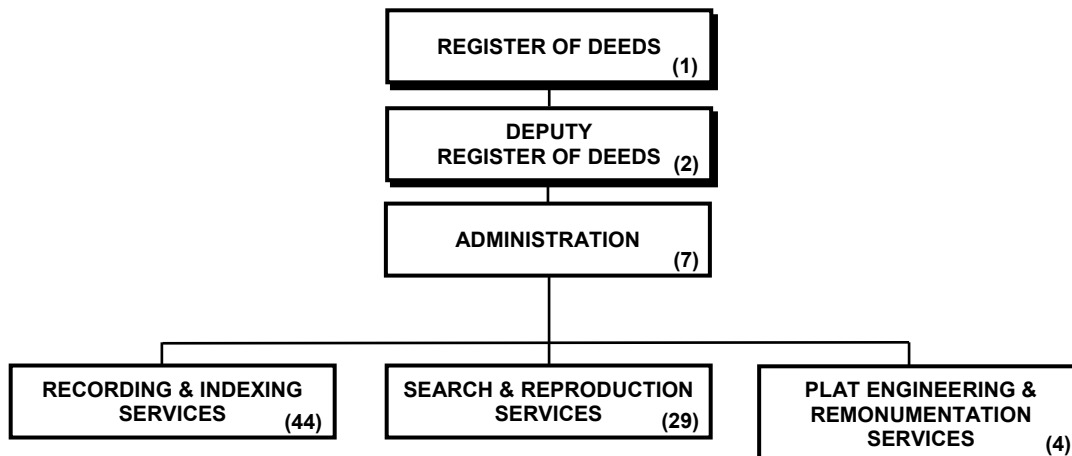


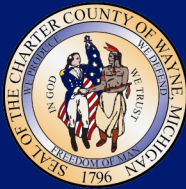
Wayne County Government FY 2009-2010 Adopted Budget

REGISTER OF DEEDS Budget Summary

Mission Vested by the power of the Constitution of the United States of America and the State of Michigan, the Register of Deeds has the responsibility to record, secure and maintain the integrity of the land records of Wayne County, thereby fostering an enhanced quality of life and improved economy.

Budget Summary		2007-2008 Budget	2008-2009 Budget	2009-2010 Budget
	Total Departmental Expenditures	\$14,213,000	\$10,953,721	\$10,181,000
	Departmental Revenue			
	State Grants and Contracts	713,000	653,721	481,000
	Charges, Fees, and Fines	13,500,000	10,300,000	9,700,000
	Total Revenues	\$14,213,000	\$10,953,721	\$10,181,000
	General Fund General Purpose	0	0	0
Positions	Total Budgeted Positions	100	100	87
Contacts	Bernard J. Youngblood 400 Monroe, 7th Floor, Detroit, MI 48226 Phone: (313) 224-5855			





Wayne County Government FY 2009-2010 Adopted Budget

REGISTER OF DEEDS Major Activities and Descriptions

ADMINISTRATION: Register of Deeds' administration provides overall department management, direction and supervision; formulates and notifies staff, as well as the public, of policy changes and legal requirements; develops and administers a budget for the department and maintains adequate resources to provide proper service levels and sets policies and regulations concerning the use of facilities and records as required by law.

RECORDING AND INDEXING SERVICES: The Register of Deeds is the only county officer authorized by state law to record, index and maintain land records. The Wayne County Register of Deeds office records up to three-quarter of a million documents a year, including deeds, mortgages, assignments, discharges and construction liens. In addition to reviewing, processing and imaging each document recorded, the Register of Deeds Office creates a variety of indexes to find each document and detailed abstract describing the most significant information contained in each document.

SEARCH AND REPRODUCTION SERVICES: The Wayne County Register of Deeds provides customized search services to the general public, to more than 150 commercial customers (title companies, banks, law

offices, etc), and scores of government agencies on a daily basis. Access is provided to more than 50 million document images and abstracts of records maintained through our computerized database, tract index and/or grantor-grantee files.

The use of the Internet has become the greatest significant change of search methods in the Register of Deeds' history. Over three million visitors have researched the data base records since its on-line availability in January 2001. Seventy-seven percent of those searches were done by name only. Information can also be retrieved by address, legal description and document registration number. The land records index can be found at the Wayne County Register of Deeds website at: www.waynecountylandrecords.com.

PLAT ENGINEERING AND REMONUMENTATION:

The Plat Engineering unit of the Wayne County Register of Deeds office reviews more than 75 plats of new subdivisions, condominium master plans, and amendments each year to assure compliance with state survey and land division requirements. The Chief Plat Engineer also serves as the Remonumentation Survey Administrator and as advisor to the Wayne County Plat Board, which is chaired by the Register of Deeds.

FISCAL YEAR 2008-2009 ACCOMPLISHMENTS AND HIGHLIGHTS:

The Register of Deeds eliminated any recording backlog by providing immediate response time for the recording of documents brought into the office that comply with all recording requirements. For those documents received by mail or through a title company, the original recorded document is returned to the submitter within 48 hours.

The Register of Deeds sustains and supports the nation's first fraud unit, which specializes in property fraud research, investigation and prosecution. This unit has set up over 500 case files of suspected fraudulent activity and has a 100% success rate in prosecution,

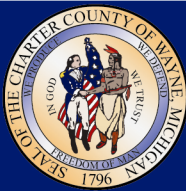
ultimately being responsible for returning almost 150 homes to the rightful owner.

Through the State's Remonumentation program, the Register of Deed's Office has completed the installation of five Continuous Operating Reference (COR) Stations throughout Wayne County. The COR Stations are highly accurate Global Positioning Systems (GPS) receivers that collect positional data every second from satellites. The density and availability of these receivers make surveying, data collection for mapping and location tracking in Wayne County among the best in the United States.

NEW INITIATIVES FOR FISCAL YEAR 2009 – 2010:

The Register of Deeds' Office will be activating its electronic recording process to the public. To date, over 500,000 documents have been recorded government to government from the Wayne County Treasurer's Office without a single piece of paper being generated. Documents are received, recorded, scanned, indexed and returned all electronically. This service has now been enhanced and will be implemented by the Register's Office to serve the

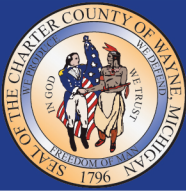
public. Initially, title companies, lenders and high volume recorders will be able to submit their documents electronically with the proper fees and have those electronic files returned to them on the same day fully recorded and indexed. Ultimately, it is the goal of the Office to open the service to anyone wishing to electronically submit documents for recording.



Wayne County Government FY 2009-2010 Adopted Budget

REGISTER OF DEEDS Performance Report

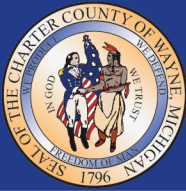
Objectives	Performance Measures	2007-08 Actuals	2008-09 Budget	2009-10 Budget
Recording and Indexing Services To enhance technology and cross-train employees in order to increase recording productivity	Number of recordings per year	459,852	460,000	500,000
Search and Reproductive Services To improve service by producing electronic prints or copies of recorded documents from the Internet rather than on paper from the search counter at the downtown office.	Average number of electronic print orders per week	30,100	31,000	32,000
Plat Engineering and Remonumentation A) Plat Reviews (Prior to recording) Review proposed subdivision plats for compliance with the Land Division Act (Act 288, PA 1967 and County requirements) B) Condominium Reviews (Prior to recording) Review condominium master deeds and amendments for compliance with the Condominium Act (Act 59, PA 1978) C) County Remonumentation Administer county portion of the State Survey and Remonumentation Act (Act 345, PA 1990)	Reviews Performed (Poor economic conditions) Reviews Performed (Poor economic conditions) Land corner recordation certificates recorded	3 64 148	0 60 150	0 70 125



Wayne County Government FY 2009-2010 Adopted Budget

REGISTER OF DEEDS Financial Report

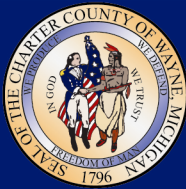
	<u>FY 2007-2008 Budget</u>	<u>FY 2008-2009 Budget</u>	<u>FY 2009-2010 Budget</u>
00101 General Fund			
236 Register of Deeds			
Revenues			
Charges, Fees, and Fines	13,500,000	10,300,000	9,700,000
Total Revenues	\$13,500,000	\$10,300,000	\$9,700,000
Expenditures			
Personnel	4,423,000	3,767,006	3,216,772
Fringe Benefits	1,713,810	1,771,770	1,365,162
Pension	455,900	485,987	686,411
Materials and Supplies	320,000	153,000	94,000
Services and Contractual Serv	5,088,190	3,408,875	3,758,836
Travel	70,000	60,000	14,200
Operating Expenses	566,800	120,462	85,353
Rentals	476,800	476,900	476,900
Other Charges	10,000	4,000	0
Capital	100,000	20,000	0
Non Capital Assets	275,500	32,000	2,366
Total Expenditures	\$13,500,000	\$10,300,000	\$9,700,000
00101 General Fund			
245 Remonumentation Grant			
Revenues			
State Grants and Contracts	713,000	653,721	481,000
Total Revenues	\$713,000	\$653,721	\$481,000
Expenditures			
Personnel	1,200	1,200	1,200
Materials and Supplies	23,000	11,000	14,000
Services and Contractual Serv	671,500	637,521	465,800
Operating Expenses	2,500	1,000	0
Capital	5,000	1,000	0
Non Capital Assets	9,800	2,000	0
Total Expenditures	\$713,000	\$653,721	\$481,000
TOTAL DEPARTMENTAL REVENUES	\$14,213,000	\$10,953,721	\$10,181,000
TOTAL DEPARTMENTAL EXPENDITURES	\$14,213,000	\$10,953,721	\$10,181,000



Wayne County Government FY 2009-2010 Adopted Budget

REGISTER OF DEEDS Summary of Positions

	<u>FY 2007-2008 Budget</u>	<u>FY 2008-2009 Budget</u>	<u>FY 2009-2010 Budget</u>
101 GENERAL FUND			
236 REGISTER OF DEEDS			
ELECTED AND EXECUTIVE	7	5	5
SUPERVISORY AND PROFESSIONAL	12	14	13
SUPPORT STAFF	81	81	69
TOTAL POSITIONS	<u>100</u>	<u>100</u>	<u>87</u>
TOTAL DEPARTMENTAL POSITIONS	<u>100</u>	<u>100</u>	<u>87</u>



Wayne County Government FY 2009-2010 Adopted Budget

REGISTER OF DEEDS Budget Change and Highlights

Increase / (Decrease) from 2008-2009 Adopted Budget		Description of Change
REVENUES		
State Grants and Contracts	(172,721)	Remonumentation Grant reduced by the State.
Charges, Fees, and Fines	(600,000)	Reduction in volume of recordings anticipated.
TOTAL REVENUES	(772,721)	
EXPENDITURES		
Personnel	(550,234)	Reduced by 13 FTE's.
Fringe Benefits	(406,608)	Fringe benefit cost associated with reduced workforce.
Pension	200,424	Pension increase is due to an increase actuarial funding requirements for the County defined benefits.
Materials and Supplies	(56,000)	Reduced to match anticipated reduction of revenue.
Services and Contractual Services	178,240	Reallocation of resources to meet the needs of the department.
Travel	(45,800)	Reduced to match anticipated reduction of revenue.
Operating Expenses	(36,109)	Reduced to match anticipated reduction of revenue.
Other Charges	(4,000)	Reduced to match anticipated reduction of revenue.
Capital	(21,000)	Reduced to match anticipated reduction of revenue.
Non Capital Assets	(31,634)	Reduced to match anticipated reduction of revenue.
TOTAL EXPENDITURES	(772,721)	