



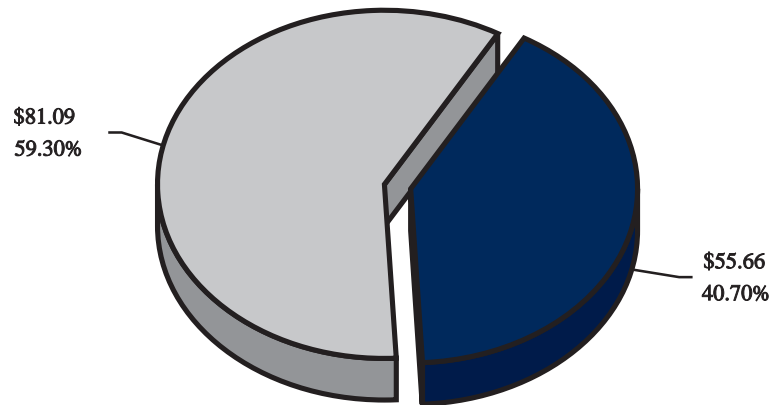
The Third Circuit Court is administered by a Chief Judge who oversees three divisions; Civil, Criminal and Family, each with a presiding judge for a total of 61 judges. The Third Judicial Circuit is the largest circuit court in Michigan and the fifth largest general jurisdiction in the United States.

WAYNE COUNTY CIRCUIT COURT

EXPENDITURE ANALYSIS

FISCAL YEAR 2007-2008

\$136.75 (in millions)

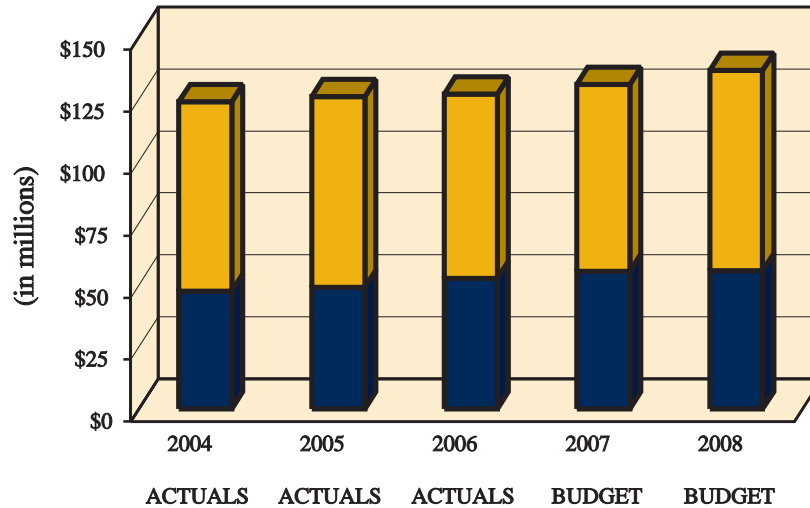


■ PERSONNEL

■ EXPENDITURES OPERATING

FIVE-YEAR EXPENDITURE TREND ANALYSIS

FISCAL YEARS 2003-2004 THROUGH 2007-2008



■ PERSONNEL

■ OTHER EXPENDITURES



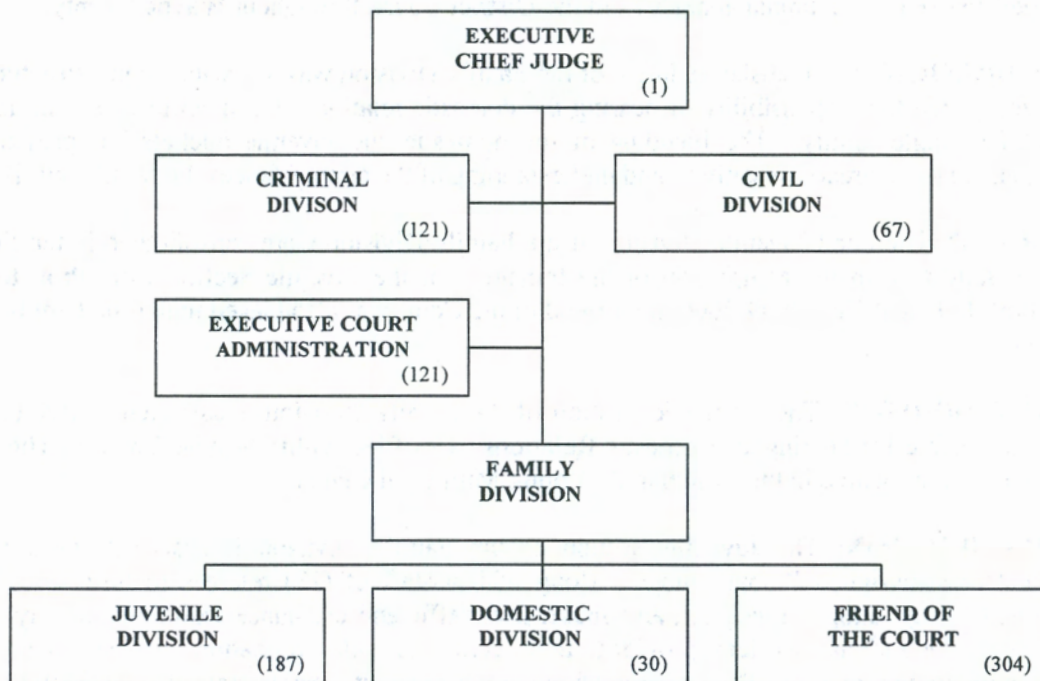
WAYNE COUNTY CIRCUIT COURT

Honorable Mary Beth Kelly, Chief Judge
(313) 224-8220

701 Coleman A. Young Municipal Center
Detroit, Michigan 48226

MISSION:

The mission of the Third Circuit Court of Michigan is to serve the public by providing a fair, accessible, effective and responsive forum for the resolution of general civil, domestic, criminal, and juvenile matters that come before the Court.



TOTAL NUMBER OF POSITIONS: 831



MAJOR ACTIVITIES AND DESCRIPTIONS:

With a total of 61 judges, more than 750 employees and nearly 90,000 new cases filed each year, the Third Judicial Circuit is the largest circuit court in Michigan and fifth largest general jurisdiction court in the United States. The Third Circuit Court is administered by a Chief Judge who oversees its three divisions; Civil, Criminal and Family, each with a presiding judge. The current organization of the Court is structured to bring efficient and effective services, while maintaining a strong commitment to justice, to the citizens of Wayne County by promoting access, fairness and accountability.

CIVIL DIVISION: The Civil Division is assigned seventeen (17) judges for the resolution of general civil cases initiated within Wayne County, where the amount in controversy exceeds \$25,000. The Civil Division is located in the Coleman A. Young Municipal Center (CAYMC), Two Woodward Avenue, Detroit, Michigan. This division acts as the Appellate Court for civil appeals from the District Courts throughout Wayne County and administrative agencies.

CRIMINAL DIVISION: The Criminal Division is assigned twenty-seven (27) judges and has sole jurisdiction over felonies and high misdemeanors occurring within Wayne County. The Criminal Division is located at the Frank Murphy Hall of Justice (FMHJ), 1441 St. Antoine, Detroit, Michigan. This division is the Appellate Court for criminal appeals from the District Courts throughout Wayne County.

FAMILY DIVISION: The Legislative intent of the Family Division was to create a court structure that can assign to one judge the responsibility of hearing the domestic relations and juvenile cases that involve the members of a single family. The blending of the domestic and juvenile dockets has provided a new structure that creates a greater sensitivity and understanding of the circumstances the family unit is facing.

The Domestic Division and Juvenile Division of the Family Division were consolidated in the Fiscal Year 1998-1999 Budget, with the completion of the transition of the Juvenile Section from Probate Court to Circuit Court. In Fiscal Year 1999-2000, the Friend of the Court was also placed under the Family Divisions of the Court.

DOMESTIC DIVISION: The Domestic Section of the Family Division is assigned twelve (12) judges who are responsible for hearing all Domestic Relations cases filed within Wayne County. The Domestic Division judges are located in the Coleman A. Young Municipal Center.

JUVENILE DIVISION: The Juvenile Section of the Family Division is assigned seven (7) judges (including 2 cross-assigned Probate Judges) along with a staff of (13) referees to hear cases involving juvenile delinquency, adoption, neglect, and abuse, and traffic and ordinance violations in Wayne County. In addition to the judicial services provided, this section provides probation services to the youthful offenders under its jurisdiction. The Juvenile Division is located at Lincoln Hall of Justice, 1025 E. Forest, Detroit, Michigan.

FRIEND OF THE COURT: The Friend of the Court, along with a staff of (8) referees assists the court in formulating and enforcing orders relating to spousal support, child support, custody, and parenting time in domestic relations matters. The office conducts investigations and makes reports and recommendations to the parties and the court. Counseling and mediation services are provided to facilitate resolution of custody and parenting time disputes. Friend of the Court offices are located in the Penobscot Building and in the Coleman A. Young Municipal Center.



EXECUTIVE COURT ADMINISTRATION: The administrative services provided by this activity include court administration, budget, human resources, jury services, case processing, information technology and data processing. The units funded under this activity serve the entire Circuit Court and have personnel serving in each of the Circuit Court facilities.

GRAND JURY: The grand jury is initiated upon request; by a vote of the Circuit Court Judges, who are empowered with the responsibility of investigating criminal activity. The County, through a budget administered by the Circuit Court, funds the expenses of the grand jury.

GOALS, OBJECTIVES AND PERFORMANCE MEASURES:

GOAL: To resolve the budget problems existing in the Court while providing a high level of service to the citizens of Wayne County by maintaining an efficient forum for addressing matters which come before the court.

OBJECTIVES:

- Continue to follow the budget deficit elimination plan developed in FY 2001-2002.
- Continue to improve efforts to identify new revenue sources and increase future and past-due fee collections.
- Continue to reduce costs by evaluating and restructuring court operations including information technology services, staffing needs and indigent counsel programs.

GOAL: To serve the citizens of Wayne County by resolving civil, domestic, criminal and juvenile matters that come before the Court within the time guidelines set by the Michigan Supreme Court.

OBJECTIVES:

- Civil proceedings - All civil cases should be settled, tried or otherwise concluded within 24 months, except for individual cases in which the court determines exceptional circumstances exist, and for which a continuing review should occur.

PERFORMANCE MEASUREMENTS:	FY 2006 ACTUALS	FY 2007 ESTIMATED	FY 2008 PROJECTED
Case Type: Civil	85%	90%	100%

- Divorce - All divorce cases should be settled, tried, or otherwise concluded within 12 months.



PERFORMANCE MEASUREMENTS:	FY 2006 <u>ACTUALS</u>	FY 2007 <u>ESTIMATED</u>	FY 2008 <u>PROJECTED</u>
Case Type: Divorce	94%	96%	100%

- Paternity - All paternity cases should be settled, tried, or otherwise concluded within 8 months.

PERFORMANCE MEASUREMENTS:	FY 2006 <u>ACTUALS</u>	FY 2007 <u>ESTIMATED</u>	FY 2008 <u>PROJECTED</u>
Case Type: Paternity	94%	96%	100%

- Child Support/Responding Uniform Reciprocal Enforcement of Support Act (RURESA) - All child support/responding RURESA cases should be adjudicated or otherwise concluded within 8 months.

PERFORMANCE MEASUREMENTS:	FY 2006 <u>ACTUALS</u>	FY 2007 <u>ESTIMATED</u>	FY 2008 <u>PROJECTED</u>
Case Type: RURESA	82%	90%	100%

- Criminal proceedings - All felony cases should be adjudicated or otherwise concluded within 10 months from the date of entry of order binding the defendant over. Incarcerated persons should be afforded priority for trial.

PERFORMANCE MEASUREMENTS:	FY 2006 <u>ACTUALS</u>	FY 2007 <u>ESTIMATED</u>	FY 2008 <u>PROJECTE</u>
Case Type: Criminal	99%	99%	100%

- Appeals from Courts of Limited Jurisdiction - All appeals to the Circuit Court from district courts should be settled or otherwise concluded within 6 months from the filing of the Claim of Appeal.

PERFORMANCE MEASUREMENTS:	FY 2006 <u>ACTUALS</u>	FY 2007 <u>ESTIMATED</u>	FY 2008 <u>PROJECTED</u>
Case Type: Appeals from Courts	79%	85%	100%

- Appeals from Administrative Agencies - All appeals to the Circuit Court from administrative agencies should be settled or otherwise concluded within 6 months from the filing of the Claim of Appeal.

PERFORMANCE MEASUREMENTS:	FY 2006 <u>ACTUALS</u>	FY 2007 <u>ESTIMATED</u>	FY 2008 <u>PROJECTED</u>
Case Type: Appeals from Agencies	86%	90%	100%

- Juvenile In-Custody Matters - All juvenile in-custody matters should reach disposition or otherwise be concluded within 3 months of authorization of the petition.

PERFORMANCE MEASUREMENTS:	FY 2006 <u>ACTUALS</u>	FY 2007 <u>ESTIMATED</u>	FY 2008 <u>PROJECTED</u>
Case Type: Juvenile In-Custody	46.5%	60%	100%



- Juvenile Not-In-Custody Matters - All juvenile not-in-custody matters should reach disposition or otherwise be concluded within 7 months of authorization of the petition.

PERFORMANCE MEASUREMENTS:	FY 2006 <u>ACTUALS</u>	FY 2007 <u>ESTIMATED</u>	FY 2008 <u>PROJECTED</u>
Case Type: Juvenile Not-In-Custody	48.5%	60%	100%

OTHER OBJECTIVES:

- Increase the establishment of child support orders by continuing a grant-funded project called "Reducing Paternity Defaults with E's (explain, educate, and encourage)".
- Continue to improve the Court's financial controls in all areas of operation.
- Continue the use of Intensive Probation Services under Community of Mental Health funding to high-risk juvenile probationers and their families.
- Continue to address the concerns in meeting Title IV-E requirements.

ACCOMPLISHMENTS:

- The Court completed implementation of the blended docket/case assignment program for child protective proceedings and delinquency petitions in the Family Division-Juvenile Section. The blended docket concept was designed to promote equalization of case assignments and a more effective case management process. The program was developed based on recommendations from the 2005 Juvenile Docket Task Force.
- The Court successfully completed the second phase of a multi-year new case management project involving the migration of the Family Division-Juvenile Section guardianship cases to the Tyler Technologies Odyssey Case manager software application.
- The Drug and Problem Solving Courts are responsible for administering the existing Drug Court operations in the Criminal Division and Juvenile Division insuring compliance with federal guidelines. The Court continues to provide these Juvenile and Adult Drug Adjudication Programs to reduce recidivism and address the needs of offenders who have drug and alcohol dependency.
- In partnership with Hutzel Woman's Hospital, the Friend of the Court facilitated a grant-funded collaborative demonstration project called "Dads from Day One" with the main objectives being to improve parenting behavior through a variety of social services, increase voluntary acknowledgement of paternity, decrease the number of paternity default cases, and encourage the marriage of unwed parents where appropriate.
- The Friend of the Court completed and passed the Self-Assessment Audit that is a federally mandated annual audit for actions taken in FY 2005. The audit measures eight criteria, including case closure, disbursements, expedited processes, establishment, review and adjustment, enforcement, medical enforcement, and interstate.



- The Friend of the Court collected and disbursed \$344,483,306 to Wayne County families in 2006 under the federal certified computer system, Michigan Child Support Enforcement Services (MiCSES). The total collected and disbursed since the MiCSES system was implemented on October 1, 2001 is \$1.8 billion.
- The Third Judicial Circuit Appeal Transcript Web Site was implemented to enable attorneys to view cases, select proceedings and order transcripts on-line for civil and domestic proceedings thereby saving time and reducing the cost associated with this process. A system to provide criminal appeal transcripts to the Prosecutor's Office electronically was also implemented resulting in a reduction in the time and materials necessary to produce appeal transcripts.

DID YOU KNOW?

Attorneys practicing in the Family Division, Juvenile and Domestic Sections, were required to attend mandatory training at the Institute for continuing Legal Education on a variety of significant subjects in order to remain on the Court's eligibility list for assignments.

The Court developed and implemented a new method for appointing attorneys in the Family Division-Juvenile Section, which ensures that each referee will work with the same attorneys in addressing the issues of juveniles in his or her hearing room.

The Friend of the Court launched a new community-based project "For Our Children" which consists of a consortium of representatives from a variety of community agencies, groups, government entities, and the media. These individuals are faced with questions and comments relating to issues and concerns that are then communicated to the Friend of the Court. This valuable project allows the Friend of the Court the opportunity to increase public knowledge of available programs, create a visible presence in the community, and improve public relations and the delivery of services.



SUMMARY OF POSITIONS, REVENUES, AND EXPENDITURES

Fund: 292 Juvenile Justice Fund
Activity: 132 Circuit Court

POSITIONS	2006	2007	2008
	BUDGET	BUDGET	BUDGET
Elected and Executive	0	0	5
Support Staff	0	0	10
Supervisory and Professional	0	0	80
TOTAL POSITIONS	0	0	95

Fund: 835 Circuit Court Fund
Activity: 132 Circuit Court

POSITIONS	2006	2007	2008
	BUDGET	BUDGET	BUDGET
Elected and Executive	106	107	102
Supervisory and Professional	163	163	81
Support Staff	255	256	249
TOTAL POSITIONS	524	526	432

Fund: 836 Friend of the Court Fund
Activity: 132 Friend of the Court

POSITIONS	2006	2007	2008
	BUDGET	BUDGET	BUDGET
Elected and Executive	20	20	20
Supervisory and Professional	121	121	121
Support Staff	163	163	163
TOTAL POSITIONS	304	304	304
TOTAL DEPARTMENTAL POSITIONS	828	830	831

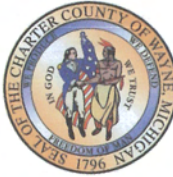


SUMMARY OF POSITIONS, REVENUES, AND EXPENDITURES

Fund: 101 General Fund Activity: 132 Circuit Court		2006 BUDGET	2007 BUDGET	2008 BUDGET
EXPENDITURES				
Operating Expenditures		\$ 83,424,300	\$ 83,553,900	\$ 83,594,700
TOTAL EXPENDITURES		\$ 83,424,300	\$ 83,553,900	\$ 83,594,700

Fund: 101 General Fund Activity: 161 Grand Jury		2006 BUDGET	2007 BUDGET	2008 BUDGET
EXPENDITURES				
Operating Expenditures		\$ 26,000	\$ 26,000	\$ 28,800
TOTAL EXPENDITURES		\$ 26,000	\$ 26,000	\$ 28,800

Fund: 292 Juvenile Justice Fund Activity: 132 Circuit Court		2006 BUDGET	2007 BUDGET	2008 BUDGET
REVENUES				
State Grants and Contracts		\$ 412,100	\$ 473,850	\$ 1,988,371
Local Grants and Contracts		284,000	473,850	5,477,875
Charges, Fees, and Fines		128,100	0	0
TOTAL REVENUES		\$ 824,200	\$ 947,700	\$ 7,466,246
EXPENDITURES				
Personnel		\$ 595,500	\$ 742,600	\$ 6,750,700
Operating Expenditures		228,700	205,100	715,546
TOTAL EXPENDITURES		\$ 824,200	\$ 947,700	\$ 7,466,246



SUMMARY OF POSITIONS, REVENUES, AND EXPENDITURES

Fund: 835	Circuit Court Fund
Activity: 132	Circuit Court

	2006 BUDGET	2007 BUDGET	2008 BUDGET
REVENUES			
Federal Grants and Contracts	\$ 330,000	\$ 681,000	\$ 611,100
State Grants and Contracts	6,356,800	6,357,300	6,186,700
Local Grants and Contracts	88,388,400	89,837,300	83,950,600
Charges, Fees, and Fines	5,731,100	5,599,900	5,514,700
Interest, Dividends	0	0	(406,500)
Other Financing Sources	0	(498,300)	(64,500)
TOTAL REVENUES	\$ 100,806,300	\$ 101,977,200	\$ 95,792,100
EXPENDITURES			
Personnel	\$ 33,264,500	\$ 34,528,809	\$ 28,032,728
Operating Expenditures	67,541,800	67,448,391	66,661,872
Operating Transfers Out	0	0	1,097,500
TOTAL EXPENDITURES	\$ 100,806,300	\$ 101,977,200	\$ 95,792,100

Fund: 835	Circuit Court Fund
Activity: 161	Grand Jury

	2006 BUDGET	2007 BUDGET	2008 BUDGET
REVENUES			
Local Grants and Contracts	\$ 26,000	\$ 26,000	\$ 28,800
TOTAL REVENUES	\$ 26,000	\$ 26,000	\$ 28,800
EXPENDITURES			
Operating Expenditures	\$ 26,000	\$ 26,000	\$ 28,800
TOTAL EXPENDITURES	\$ 26,000	\$ 26,000	\$ 28,800



SUMMARY OF POSITIONS, REVENUES, AND EXPENDITURES

Fund: 836	Friend of the Court Fund
Activity: 132	Friend of the Court

	2006 BUDGET	2007 BUDGET	2008 BUDGET
REVENUES			
Federal Grants and Contracts	\$ 1,914,900	\$ 20,895,700	\$ 20,430,300
State Grants and Contracts	23,188,200	5,103,500	6,102,700
Local Grants and Contracts	1,236,900	439,900	129,600
Charges, Fees, and Fines	1,612,600	1,612,600	1,906,100
Interest, Dividends	0	(700,000)	(1,500,000)
Other Financing Sources	0	1,050,000	2,203,600
TOTAL REVENUES	\$ 27,952,600	\$ 28,401,700	\$ 29,272,300
EXPENDITURES			
Personnel	\$ 20,233,900	\$ 20,300,500	\$ 20,873,300
Operating Expenditures	7,718,700	8,101,200	8,399,000
TOTAL EXPENDITURES	\$ 27,952,600	\$ 28,401,700	\$ 29,272,300

Fund: 837	Court Capital Fund
Activity: 401	Capital Programs

	2006 BUDGET	2007 BUDGET	2008 BUDGET
REVENUES			
Other Financing Sources	0	0	4,186,000
TOTAL REVENUES	\$ 0	\$ 0	\$ 4,186,000
EXPENDITURES			
Operating Expenditures	0	0	4,186,000
TOTAL EXPENDITURES	\$ 0	\$ 0	\$ 4,186,000
TOTAL DEPARTMENTAL REVENUES	\$ 129,609,100	\$ 131,352,600	\$ 136,745,446
TOTAL DEPARTMENTAL EXPENDITURES	\$ 129,609,100	\$ 131,352,600	\$ 136,745,446