

APPENDIX E-1

Wayne County Parks Optional HeadWall Detail For Storm Drain Outlet On River Courses

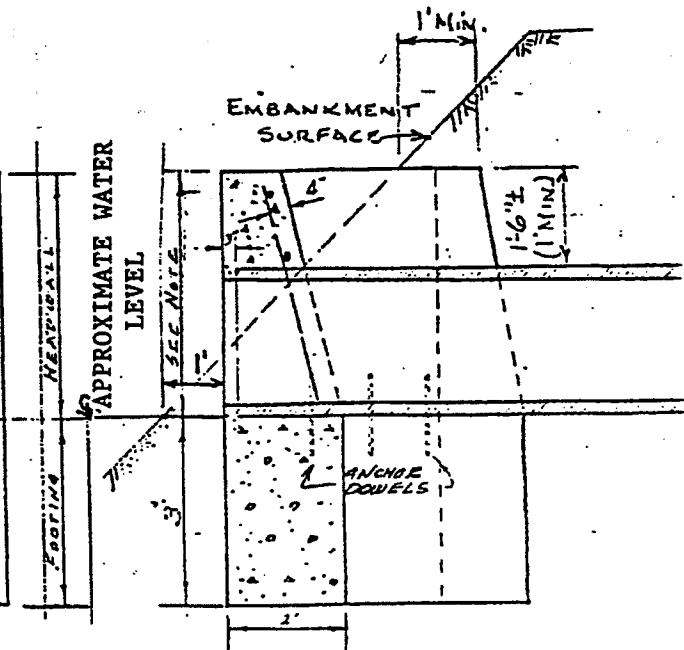
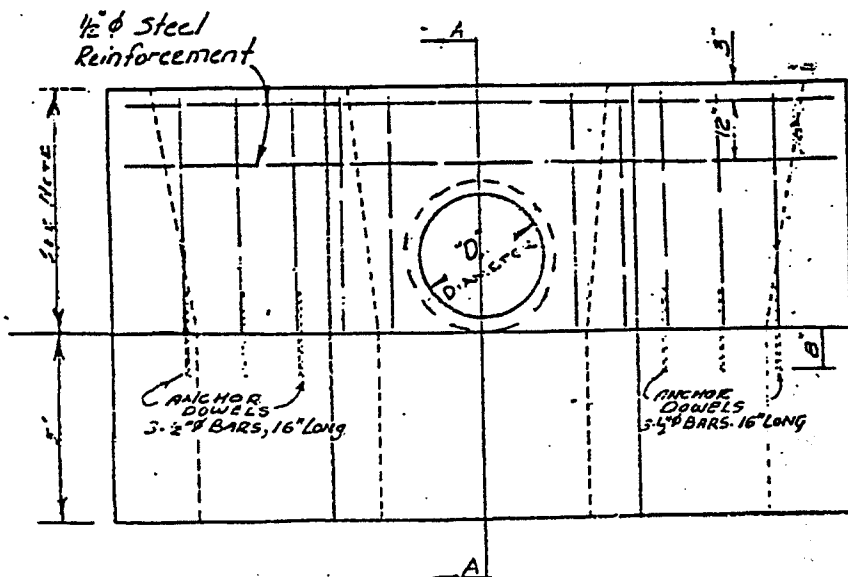
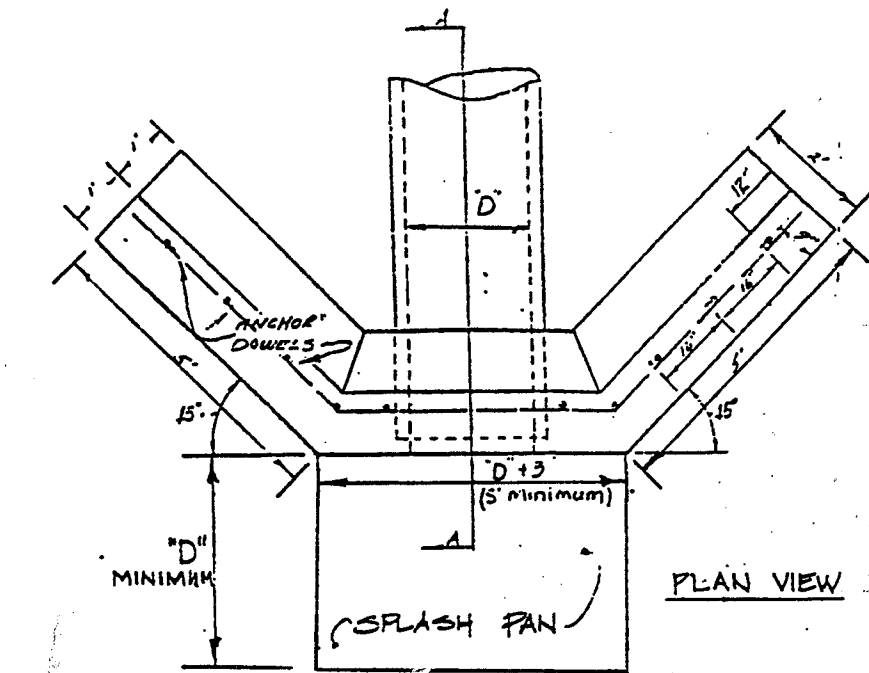
NOTES

FOOTINGS TO BE POURED SEPARATE FROM HEADWALL USING 6 REINFORCING RODS FOR ANCHOR DOWELS.

FACE OF HEADWALL SHALL BE LOCATED 1 FT. OUTSIDE THE EDGE OF NORMAL WATER LEVEL.

HEIGHT OF HEADWALL WILL VARY ACCORDING TO THE CHARACTER OF THE BANK AT THE STRUCTURE.

REINFORCE HEADWALL (ABOVE FOOTING) WITH $\frac{1}{2}$ " O.C. BARS SPACED AT 16" MAX HORIZONTAL AND VERTICAL, AS SHOWN.



HEADWALL DETAIL - Storm Drain Outlet on River Courses

WAYNE COUNTY OFFICE OF PUBLIC SERVICE
Department of Parks