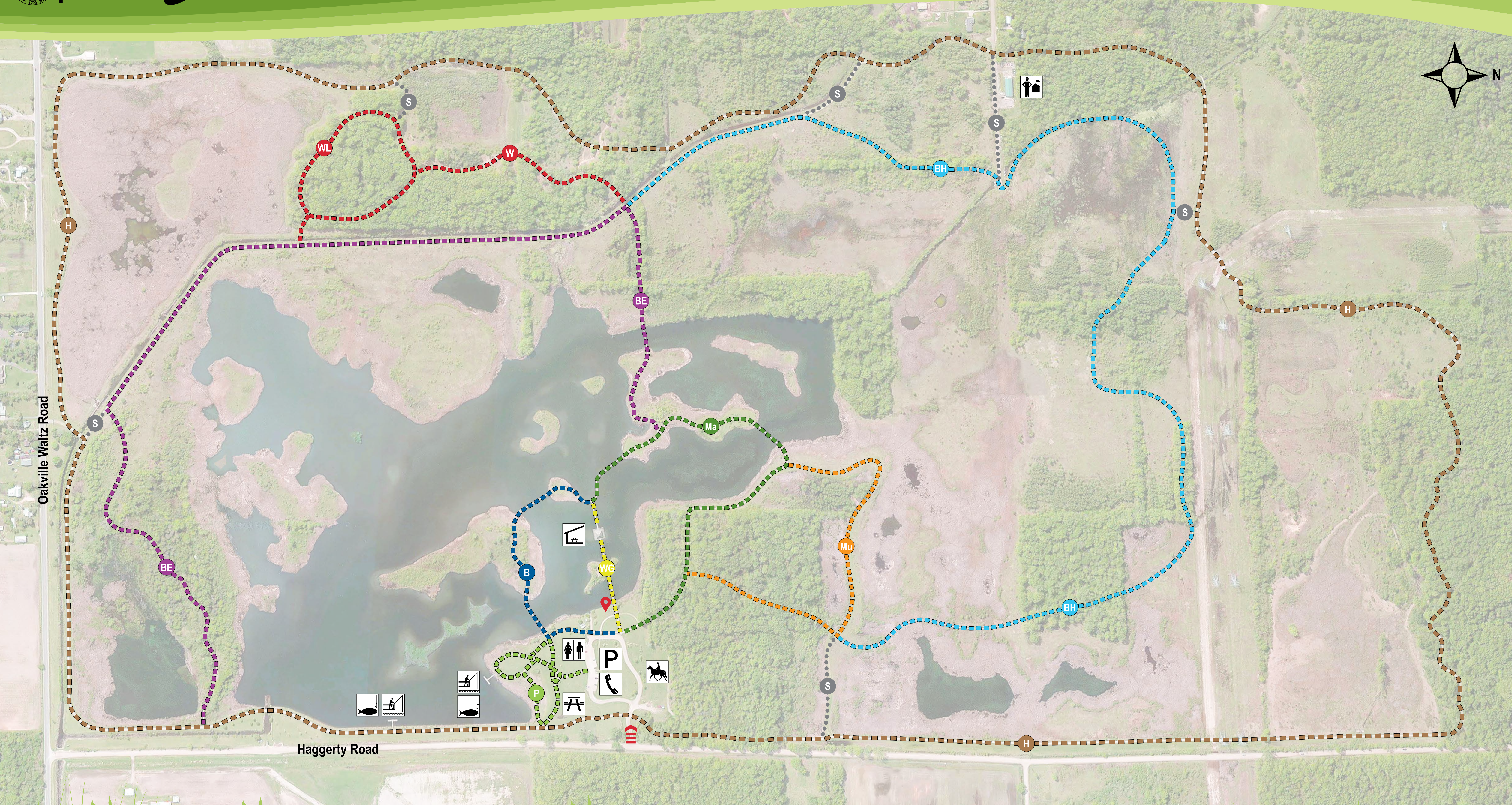


Crosswinds Marsh Interpretive Preserve

Wayne County Parks: 734.261.1990
Crosswinds Marsh: 734.654.1223
Visit us at www.parks.waynecounty.com



MARSH RULES
Please stay on marked trails
Fish in designated areas ONLY
Dogs must be leashed
No bicycles beyond parking lot
No personal watercraft
No ice skating

Prohibited in Marsh:
- Hunting
- Trapping
- Littering
- Swimming
- Camping
- Camp Fires
- Drugs & Alcohol
- ATV
- Collecting Plants & Animals



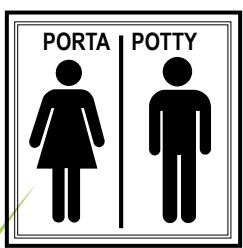
Maintenance Building



Indoor Picnic Area



Outdoor Picnic Area



Unisex Restroom



Emergency Phone



Parking



Fishing Dock



Fishing Area



Horse Unloading & Trailer Parking



You Are Here



Haggerty Road Entrance



Muskrat Trail
Length: 0.5 miles



Blue Heron Trail
Length: 1.6 miles



Bluegill Trail
Length: 0.3 miles



Wetland Garden Trail
Length: 0.1 miles



Pedestrian Trail
Length: 0.5 miles



Mallard Trail
Length: 0.6 miles



Woodpecker Trail
Length: 0.3 miles



Woodpecker Loop Trail
Length: 0.5 miles



Bald Eagle Trail
Length: 1.8 miles



Horse Trail
Length: 4.5 miles



Service Trails
Parks Staff Only

Like us on Facebook by scanning the QR code with your smartphone.

